

For Research Use Only

CHMP6 Polyclonal antibody, PBS Only

Catalog Number: 16278-1-PBS

Featured Product



Basic Information

Catalog Number:

16278-1-PBS

Source:

Rabbit

Isotype:

IgG

Immunogen Catalog Number:

AG9357

GenBank Accession Number:

BC010108

GeneID (NCBI):

79643

UNIPROT ID:

Q96FZ7

Full Name:

chromatin modifying protein 6

Calculated MW:

201 aa, 23 kDa

Observed MW:

28-30 kDa

Purification Method:

Antigen affinity purification

Applications

Tested Applications:

WB, IHC, IP, Indirect ELISA

Species Specificity:

human, mouse, rat

Background Information

CHMP6 (charged multivesicular body protein 6) is a protein that plays a significant role in the formation of multivesicular bodies (MVBs) within cells. It is a component of the endosomal sorting complex required for transport III (ESCRT-III), which is involved in the sorting and transport of proteins within the cell. CHMP6 has been identified as a novel prognostic biomarker in bladder cancer, where it enhances cell survival and migration by regulating the cell cycle. (PMID: 40630215)

Storage

Storage:

Store at -80°C.

The product is shipped with ice packs. Upon receipt, store it immediately at -80°C

Storage Buffer:

PBS only, pH7.3

For technical support and original validation data for this product please contact:

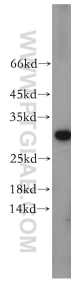
T: 4006900926

E: Proteintech-CN@ptglab.com

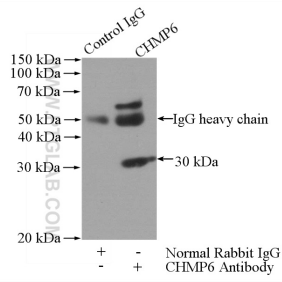
W: ptgcn.com

This product is exclusively available under Proteintech Group brand and is not available to purchase from any other manufacturer.

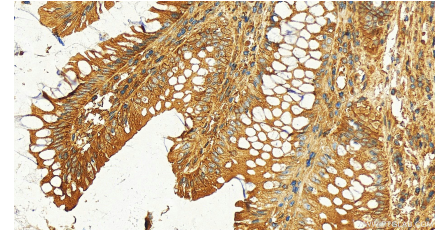
Selected Validation Data



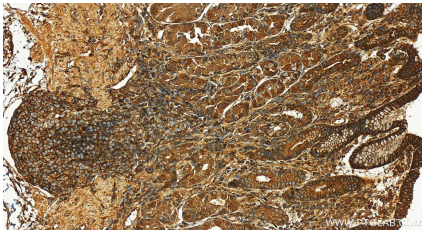
mouse testis tissue were subjected to SDS PAGE followed by western blot with 16278-1-AP (CHMP6 antibody) at dilution of 1:400 incubated at room temperature for 1.5 hours. This data was developed using the same antibody clone with 16278-1-PBS in a different storage buffer formulation.



IP result of anti-CHMP6 (IP:16278-1-AP, 4 μ g; Detection:16278-1-AP 1:500) with mouse testis tissue lysate 2400 μ g. This data was developed using the same antibody clone with 16278-1-PBS in a different storage buffer formulation.



Immunohistochemical analysis of paraffin-embedded human colon cancer slide using 16278-1-AP (CHMP6 antibody) at dilution of 1:400 (under 20x lens). Heat mediated antigen retrieval with Tris-EDTA buffer (pH 9.0). This data was developed using the same antibody clone with 16278-1-PBS in a different storage buffer formulation.



Immunohistochemical analysis of paraffin-embedded human stomach tissue slide using 16278-1-AP (CHMP6 antibody) at dilution of 1:200 (under 20x lens). Heat mediated antigen retrieval with Tris-EDTA buffer (pH 9.0). This data was developed using the same antibody clone with 16278-1-PBS in a different storage buffer formulation.