

For Research Use Only

CHMP6 Polyclonal antibody

Catalog Number: 16278-1-AP

Featured Product

5 Publications



Basic Information

Catalog Number:

16278-1-AP

Size:

700 ug/ml

Source:

Rabbit

Isotype:

IgG

Immunogen Catalog Number:

AG9357

GenBank Accession Number:

BC010108

GeneID (NCBI):

79643

UNIPROT ID:

Q96FZ7

Full Name:

chromatin modifying protein 6

Calculated MW:

201 aa, 23 kDa

Observed MW:

28-30 kDa

Purification Method:

Antigen affinity purification

Recommended Dilutions:

WB 1:500-1:1000

IP 0.5-4.0 ug for 1.0-3.0 mg of total protein lysate

IHC 1:50-1:500

Applications

Tested Applications:

WB, IHC, IP, ELISA

Cited Applications:

WB, IF

Species Specificity:

human, mouse, rat

Cited Species:

human, canine

Note-IHC: suggested antigen retrieval with TE buffer pH 9.0; (*) Alternatively, antigen retrieval may be performed with citrate buffer pH 6.0

Positive Controls:

WB : mouse testis tissue, A375 cells, A431 cells, Jurkat cells, U-937 cells

IP : mouse testis tissue,

IHC : human stomach tissue, human colon cancer

Background Information

Notable Publications

Author	Pubmed ID	Journal	Application
Eva P Karasmanis	31204162	Curr Biol	WB
Nicholas T Streck	32522858	J Virol	WB
Vincent Mercier	32753669	Nat Cell Biol	IF

Storage

Storage:

Store at -20°C. Stable for one year after shipment.

Storage Buffer:

PBS with 0.02% sodium azide and 50% glycerol pH 7.3.

Aliquoting is unnecessary for -20°C storage

For technical support and original validation data for this product please contact:

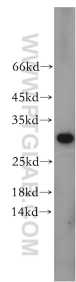
T: 4006900926

E: Proteintech-CN@ptglab.com

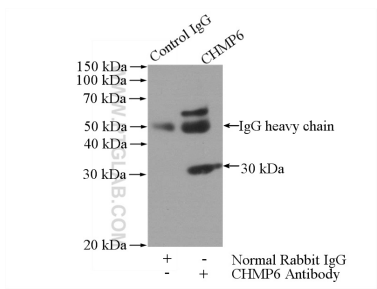
W: ptgcn.com

This product is exclusively available under Proteintech Group brand and is not available to purchase from any other manufacturer.

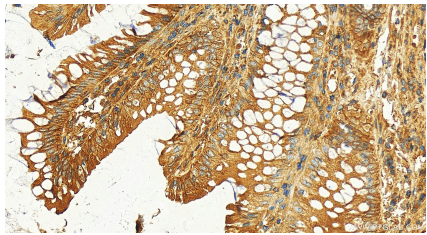
Selected Validation Data



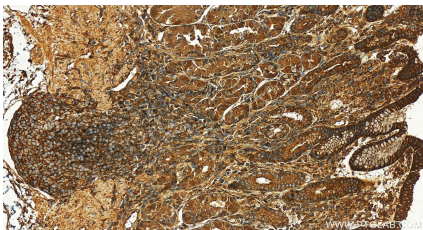
mouse testis tissue were subjected to SDS PAGE followed by western blot with 16278-1-AP (CHMP6 antibody) at dilution of 1:400 incubated at room temperature for 1.5 hours.



IP result of anti-CHMP6 (IP:16278-1-AP, 4ug; Detection:16278-1-AP 1:500) with mouse testis tissue lysate 2400ug.



Immunohistochemical analysis of paraffin-embedded human colon cancer slide using 16278-1-AP (CHMP6 antibody) at dilution of 1:400 (under 20x lens). Heat mediated antigen retrieval with Tris-EDTA buffer (pH 9.0).



Immunohistochemical analysis of paraffin-embedded human stomach tissue slide using 16278-1-AP (CHMP6 antibody) at dilution of 1:200 (under 20x lens). Heat mediated antigen retrieval with Tris-EDTA buffer (pH 9.0).