

For Research Use Only

# GCC1 Polyclonal antibody

Catalog Number: 16271-1-AP

7 Publications



## Basic Information

Catalog Number:

16271-1-AP

Size:

1000 µg/ml

Source:

Rabbit

Isotype:

IgG

Immunogen Catalog Number:

AG9339

GenBank Accession Number:

BC014100

GeneID (NCBI):

79571

UNIPROT ID:

Q96CN9

Full Name:

GRIP and coiled-coil domain containing 1

Calculated MW:

775 aa, 88 kDa

Observed MW:

105 kDa

Purification Method:

Antigen affinity purification

Recommended Dilutions:

WB 1:2000-1:12000

IHC 1:50-1:500

IF/ICC 1:10-1:100

## Applications

Tested Applications:

WB, IHC, IF/ICC, ELISA

Cited Applications:

WB, IF

Species Specificity:

human, mouse

Cited Species:

human

**Note-IHC: suggested antigen retrieval with TE buffer pH 9.0; (\*) Alternatively, antigen retrieval may be performed with citrate buffer pH 6.0**

Positive Controls:

WB : HeLa cells, mouse ovary tissue

IHC : human liver tissue,

IF/ICC : A431 cells,

## Background Information

GCC1 (Golgi coiled coil protein 1), also known as GCC1P or GCC88, is a protein probably involved in maintaining Golgi structure. The MW of this protein is 105 kDa, and Catalog#16271-1-AP specially recognises the 105 kDa protein.

## Notable Publications

Author	Pubmed ID	Journal	Application
Jianchao Zhang	35291301	bioRxiv	WB
Erpan Ahat	35780830	J Biol Chem	WB
Stephen C Ireland	32583744	Mol Biol Cell	WB

## Storage

Storage:

Store at -20°C. Stable for one year after shipment.

Storage Buffer:

PBS with 0.02% sodium azide and 50% glycerol pH 7.3.

Aliquoting is unnecessary for -20°C storage

For technical support and original validation data for this product please contact:

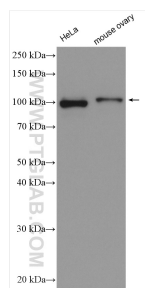
T: 4006900926

E: [Proteintech-CN@ptglab.com](mailto:Proteintech-CN@ptglab.com)

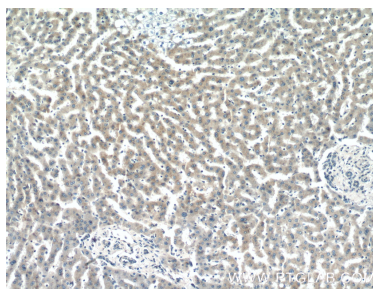
W: [ptgcn.com](http://ptgcn.com)

This product is exclusively available under Proteintech Group brand and is not available to purchase from any other manufacturer.

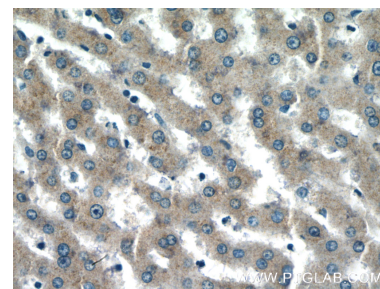
## Selected Validation Data



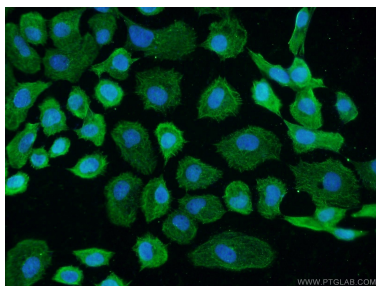
Various lysates were subjected to SDS PAGE followed by western blot with 16271-1-AP (GCC1 antibody) at dilution of 1:6000 incubated at room temperature for 1.5 hours.



Immunohistochemical analysis of paraffin-embedded human liver tissue slide using 16271-1-AP (GCC1 antibody) at dilution of 1:200 (under 10x lens).



Immunohistochemical analysis of paraffin-embedded human liver tissue slide using 16271-1-AP (GCC1 antibody) at dilution of 1:200 (under 40x lens).



Immunofluorescent analysis of A431 cells using 16271-1-AP (GCC1 antibody) at dilution of 1:25 and Alexa Fluor 488-conjugated Goat Anti-Rabbit IgG(H+L).