

For Research Use Only

TSR2 Polyclonal antibody

Catalog Number: 16263-1-AP **2 Publications**



Basic Information

Catalog Number:

16263-1-AP

Size:

1000 µg/ml

Source:

Rabbit

Isotype:

IgG

Immunogen Catalog Number:

AG9328

GenBank Accession Number:

BC011825

GeneID (NCBI):

90121

UNIPROT ID:

Q969E8

Full Name:

TSR2, 20S rRNA accumulation, homolog (S. cerevisiae)

Calculated MW:

191 aa, 21 kDa

Observed MW:

24-30 kDa

Purification Method:

Antigen affinity purification

Recommended Dilutions:

WB 1:500-1:2000

IHC 1:20-1:200

IF 1:10-1:100

Applications

Tested Applications:

IF/ICC, IHC, WB, ELISA

Cited Applications:

IHC

Species Specificity:

human, mouse, rat

Cited Species:

human

Note-IHC: suggested antigen retrieval with TE buffer pH 9.0; (*) Alternatively, antigen retrieval may be performed with citrate buffer pH 6.0

Positive Controls:

WB: HeLa cells, HEK-293 cells, mouse kidney tissue

IHC: human liver tissue, human epididymis tissue, human heart tissue, human kidney tissue, human lung tissue, human placenta tissue, human spleen tissue

IF: MCF-7 cells,

Background Information

Notable Publications

Author	Pubmed ID	Journal	Application
Ekaterina S Snigirevskaya	28545761	Acta Histochem	IHC
Ekaterina S Snigirevskaya	30969020	Cell Biol Int	IHC

Storage

Storage:

Store at -20°C. Stable for one year after shipment.

Storage Buffer:

PBS with 0.02% sodium azide and 50% glycerol pH 7.3.

Aliquoting is unnecessary for -20°C storage

For technical support and original validation data for this product please contact:

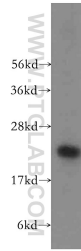
T: 4006900926

E: Proteintech-CN@ptglab.com

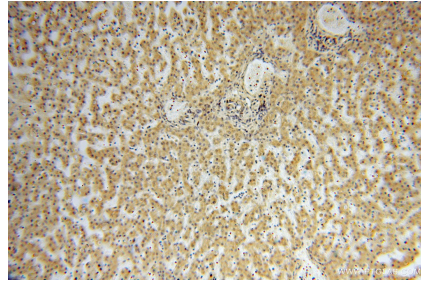
W: ptgcn.com

This product is exclusively available under Proteintech Group brand and is not available to purchase from any other manufacturer.

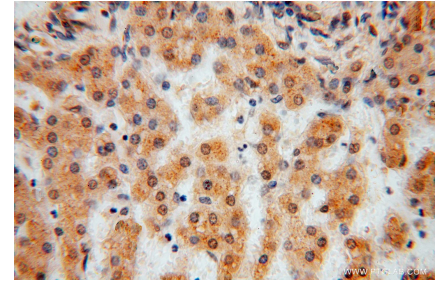
Selected Validation Data



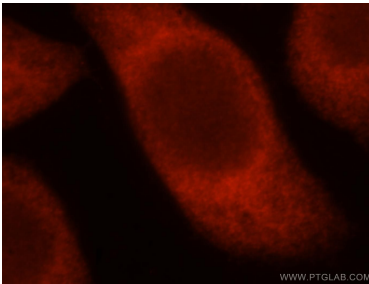
HeLa cells were subjected to SDS PAGE followed by western blot with 16263-1-AP (TSR2 antibody) at dilution of 1:400 incubated at room temperature for 1.5 hours.



Immunohistochemical analysis of paraffin-embedded human liver using 16263-1-AP (TSR2 antibody) at dilution of 1:50 (under 10x lens).



Immunohistochemical analysis of paraffin-embedded human liver using 16263-1-AP (TSR2 antibody) at dilution of 1:50 (under 40x lens).



Immunofluorescent analysis of MCF-7 cells, using TSR2 antibody 16263-1-AP at 1:25 dilution and Rhodamine-labeled goat anti-rabbit IgG (red).