

For Research Use Only

MRPL1 Polyclonal antibody

Catalog Number: 16254-1-AP

1 Publications



Basic Information

Catalog Number:

16254-1-AP

Size:

200 µg/ml

Source:

Rabbit

Isotype:

IgG

Immunogen Catalog Number:

AG9270

GenBank Accession Number:

BC015109

GeneID (NCBI):

65008

UNIPROT ID:

Q9BYD6

Full Name:

mitochondrial ribosomal protein L1

Calculated MW:

303 aa, 34 kDa

Observed MW:

34 kDa

Purification Method:

Antigen affinity purification

Recommended Dilutions:

WB 1:500-1:2000

IHC 1:50-1:500

Applications

Tested Applications:

WB, IHC, ELISA

Cited Applications:

WB

Species Specificity:

human, mouse, rat

Cited Species:

human

Note-IHC: suggested antigen retrieval with TE buffer pH 9.0; (*) Alternatively, antigen retrieval may be performed with citrate buffer pH 6.0

Positive Controls:

WB : HeLa cells, HepG2 cells, K-562 cells

IHC : human lung cancer tissue,

Background Information

Notable Publications

Author	Pubmed ID	Journal	Application
Liang Wang	37971521	Cell Mol Life Sci	WB

Storage

Storage:

Store at -20°C. Stable for one year after shipment.

Storage Buffer:

PBS with 0.02% sodium azide and 50% glycerol pH 7.3.

Aliquoting is unnecessary for -20°C storage

For technical support and original validation data for this product please contact:

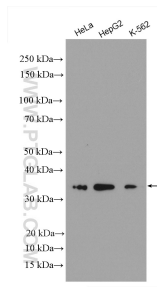
T: 4006900926

E: Proteintech-CN@ptglab.com

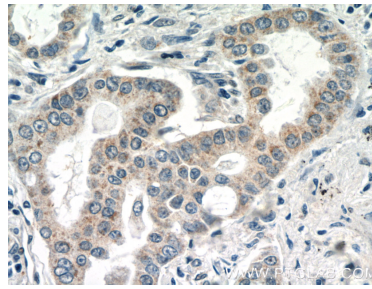
W: ptgcn.com

This product is exclusively available under Proteintech Group brand and is not available to purchase from any other manufacturer.

Selected Validation Data



Various lysates were subjected to SDS PAGE followed by western blot with 16254-1-AP (MRPL1 antibody) at dilution of 1:1000 incubated at room temperature for 1.5 hours.



Immunohistochemical analysis of paraffin-embedded human lung cancer tissue slide using 16254-1-AP (MRPL1 Antibody) at dilution of 1:50 (under 40x lens).