

For Research Use Only

FAF2 Polyclonal antibody

Catalog Number: 16251-1-AP

Featured Product

21 Publications



Basic Information

Catalog Number:

16251-1-AP

Size:

700 µg/ml

Source:

Rabbit

Isotype:

IgG

Immunogen Catalog Number:

AG9236

GenBank Accession Number:

BC014001

GeneID (NCBI):

23197

UNIPROT ID:

Q96CS3

Full Name:

Fas associated factor family member

2

Calculated MW:

445 aa, 53 kDa

Observed MW:

53 kDa

Purification Method:

Antigen affinity purification

Recommended Dilutions:

WB 1:1000-1:8000

IP 0.5-4.0 µg for 1.0-3.0 mg of total protein lysate

IHC 1:50-1:500

Applications

Tested Applications:

WB, IP, IHC, ELISA

Cited Applications:

WB, IF, IP

Species Specificity:

human, mouse, rat

Cited Species:

human, rat, bovine

Positive Controls:

WB : HEK-293 cells, HepG2 cells, HeLa cells, mouse brain tissue, rat brain tissue, K-562 cells, MCF-7 cells, SH-SY5Y cells, U2OS cells

IP : mouse brain tissue,

IHC : human breast cancer tissue, mouse brain tissue

Note-IHC: suggested antigen retrieval with TE buffer pH 9.0; (*) Alternatively, antigen retrieval may be performed with citrate buffer pH 6.0

Background Information

Protein ETEA (FAF2, or UBXD8) is a homolog to Fas-associated factor 1 (FAF1), which is involved in Fas-mediated apoptosis. ETEA protein directly interacts with and negatively regulates neurofibromin. ETEA contains both UBA and UBX domains and overexpression of ETEA downregulates neurofibromin in human cells. It may play a role in the translocation of terminally misfolded proteins from the endoplasmic reticulum lumen to the cytoplasm and their degradation by the proteasome. ETEA is highly expressed in peripheral blood of patients with atopic dermatitis (AD) compared to normal individuals, and may regulate the resistance to apoptosis that is observed in T cells and eosinophils of AD patients.

Notable Publications

Author	Pubmed ID	Journal	Application
Ting Zhang	26424800	Mol Biol Cell	WB
Milton To	27881664	Mol Biol Cell	WB
Edmond Y Huang	29514927	Mol Biol Cell	WB

Storage

Storage:

Store at -20°C. Stable for one year after shipment.

Storage Buffer:

PBS with 0.02% sodium azide and 50% glycerol pH 7.3.

Aliquoting is unnecessary for -20°C storage

For technical support and original validation data for this product please contact:

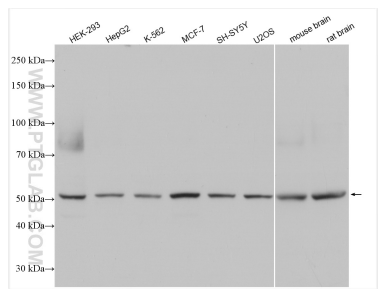
T: 4006900926

E: Proteintech-CN@ptglab.com

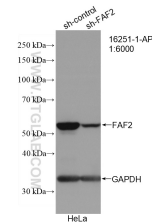
W: ptgcn.com

This product is exclusively available under Proteintech Group brand and is not available to purchase from any other manufacturer.

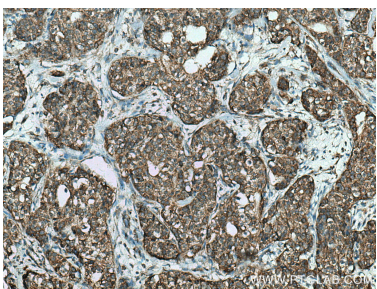
Selected Validation Data



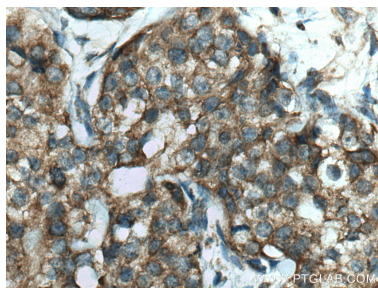
Various lysates were subjected to SDS PAGE followed by western blot with 16251-1-AP (FAF2 antibody) at dilution of 1:4000 incubated at room temperature for 1.5 hours.



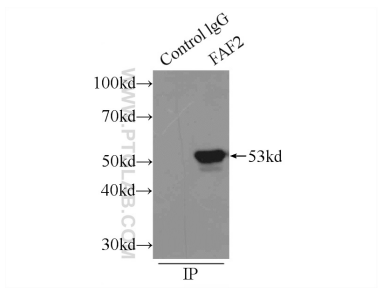
WB result of FAF2 antibody (16251-1-AP; 1:6000; incubated at room temperature for 1.5 hours) with sh-Control and sh-FAF2 transfected HeLa cells.



Immunohistochemical analysis of paraffin-embedded human breast cancer tissue slide using 16251-1-AP (FAF2 antibody) at dilution of 1:200 (under 10x lens). Heat mediated antigen retrieval with Tris-EDTA buffer (pH 9.0).



Immunohistochemical analysis of paraffin-embedded human breast cancer tissue slide using 16251-1-AP (FAF2 antibody) at dilution of 1:200 (under 40x lens). Heat mediated antigen retrieval with Tris-EDTA buffer (pH 9.0).



IP result of anti-FAF2 (IP:16251-1-AP, 3ug; Detection:16251-1-AP 1:1000) with mouse brain tissue lysate 5000ug.