

For Research Use Only

# PRKCDBP Polyclonal antibody, PBS Only

Catalog Number: 16250-1-PBS

Featured Product



## Basic Information

Catalog Number:

16250-1-PBS

Concentration:

Source:

Rabbit

Isotype:

IgG

Immunogen Catalog Number:

AG9209

GenBank Accession Number:

BC011585

GeneID (NCBI):

112464

UNIPROT ID:

Q969G5

Full Name:

protein kinase C, delta binding protein

Calculated MW:

261 aa, 28 kDa

Observed MW:

35-40 kDa

Purification Method:

Antigen affinity purification

## Applications

Tested Applications:

WB, IHC, IF/ICC, IP, Indirect ELISA

Species Specificity:

human, mouse, rat

## Background Information

Protein kinase C delta-binding protein (PRKCDBP) is a putative tumor suppressor in which alteration has been observed in several human cancers. It is a BRCA1-interacting protein, and may also be involved in DNA damage response and participate in BRCA1-mediated tumor suppression pathways. PKCdelta binds to the C-terminal half of PRKCDBP through the regulatory domain and phosphorylates it in vitro. In COS1 cells, the phosphorylation of over-expressed PRKCDBP is stimulated by 12-O-tetradecanoylphorbol-13-acetate and further enhanced by the over-expression of PKCdelta

## Storage

Storage:

Store at -80°C.

The product is shipped with ice packs. Upon receipt, store it immediately at -80°C

Storage Buffer:

PBS only, pH7.3

For technical support and original validation data for this product please contact:

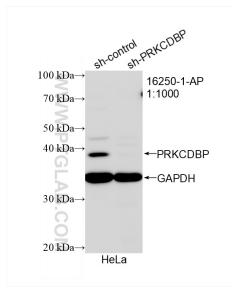
T: 4006900926

E: Proteintech-CN@ptglab.com

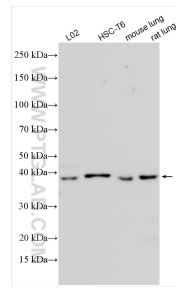
W: ptgcn.com

This product is exclusively available under Proteintech Group brand and is not available to purchase from any other manufacturer.

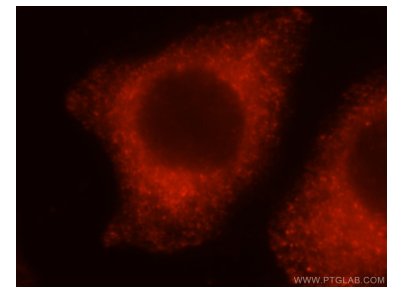
## Selected Validation Data



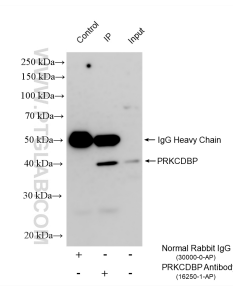
WB result of PRKCDPB antibody (16250-1-AP; 1:1000); incubated at room temperature for 1.5 hours with sh-Control and sh-PRKCDPB transfected HeLa cells. This data was developed using the same antibody clone with 16250-1-PBS in a different storage buffer formulation.



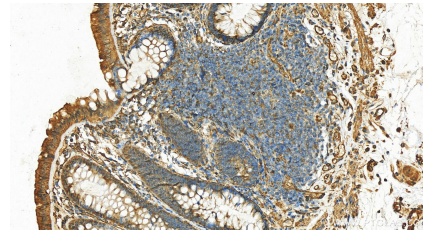
Various lysates were subjected to SDS PAGE followed by western blot with 16250-1-AP (PRKCDPB antibody) at dilution of 1:2000 incubated at room temperature for 1.5 hours. This data was developed using the same antibody clone with 16250-1-PBS in a different storage buffer formulation.



Immunofluorescent analysis of MCF-7 cells, using PRKCDPB antibody 16250-1-AP at 1:25 dilution and Rhodamine-labeled goat anti-rabbit IgG (red). This data was developed using the same antibody clone with 16250-1-PBS in a different storage buffer formulation.



IP result of anti-PRKCDPB (IP:16250-1-AP, 4 $\mu$ g; Detection:16250-1-AP 1:1000) with A549 cells lysate 1120  $\mu$ g. This data was developed using the same antibody clone with 16250-1-PBS in a different storage buffer formulation.



Immunohistochemical analysis of paraffin-embedded human normal colon slide using 16250-1-AP (PRKCDPB antibody) at dilution of 1:200 (under 20x lens). Heat mediated antigen retrieval with Tris-EDTA buffer (pH 9.0). This data was developed using the same antibody clone with 16250-1-PBS in a different storage buffer formulation.