

For Research Use Only

LMF2 Polyclonal antibody

Catalog Number: 16249-1-AP



Basic Information

Catalog Number: 16249-1-AP	GenBank Accession Number: BC014652	Purification Method: Antigen affinity purification
Size: 650 µg/ml	GeneID (NCBI): 91289	Recommended Dilutions: WB 1:1000-1:4000 IHC 1:20-1:200 IF 1:10-1:100
Source: Rabbit	UNIPROT ID: Q9BU23	
Isotype: IgG	Full Name: lipase maturation factor 2	
Immunogen Catalog Number: AG9208	Calculated MW: 682 aa, 77 kDa	
	Observed MW: 80 kDa	

Applications

Tested Applications:

IF, IHC, WB, ELISA

Species Specificity:

human, mouse, rat

Note-IHC: suggested antigen retrieval with TE buffer pH 9.0; (*) Alternatively, antigen retrieval may be performed with citrate buffer pH 6.0

Positive Controls:

WB : HeLa cells, human brain tissue

IHC : human kidney tissue,

IF : MCF-7 cells,

Background Information

Storage

Storage:

Store at -20°C. Stable for one year after shipment.

Storage Buffer:

PBS with 0.02% sodium azide and 50% glycerol pH 7.3.

Aliquoting is unnecessary for -20°C storage

For technical support and original validation data for this product please contact:

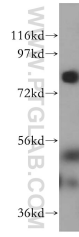
T: 4006900926

E: Proteintech-CN@ptglab.com

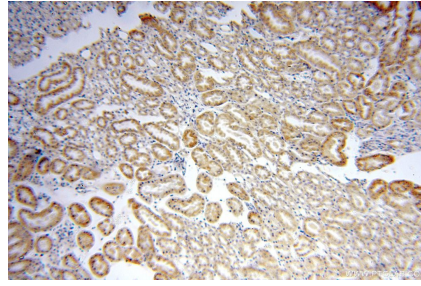
W: ptgcn.com

This product is exclusively available under Proteintech Group brand and is not available to purchase from any other manufacturer.

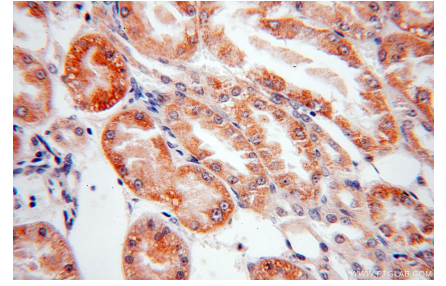
Selected Validation Data



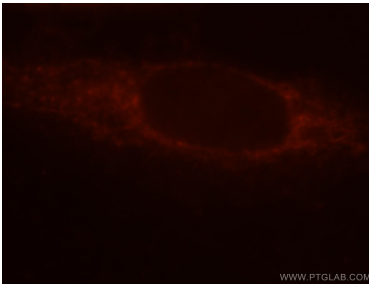
HeLa cells were subjected to SDS PAGE followed by western blot with 16249-1-AP (LMF2 antibody) at dilution of 1:800 incubated at room temperature for 1.5 hours.



Immunohistochemical analysis of paraffin-embedded human kidney using 16249-1-AP (LMF2 antibody) at dilution of 1:100 (under 10x lens).



Immunohistochemical analysis of paraffin-embedded human kidney using 16249-1-AP (LMF2 antibody) at dilution of 1:100 (under 40x lens).



Immunofluorescent analysis of MCF-7 cells, using 16249-1-AP and Rhodamine-labeled goat anti-rabbit IgG (red).