

MRPL13 Polyclonal antibody

Catalog Number: 16241-1-AP

10 Publications

Basic Information

Catalog Number:

16241-1-AP

Concentration:

470 µg/ml

Source:

Rabbit

Isotype:

IgG

Immunogen Catalog Number:

AG9105

GenBank Accession Number:

BC009190

GeneID (NCBI):

28998

UNIPROT ID:

Q9BYD1

Full Name:

mitochondrial ribosomal protein L13

Calculated MW:

178 aa, 21 kDa

Observed MW:

20-23 kDa

Purification Method:

Antigen affinity purification

Recommended Dilutions:

WB: 1:500-1:2000

IP: 0.5-4.0 µg for 1.0-3.0 mg of total protein lysate

IHC: 1:50-1:500

Applications

Tested Applications:

WB, IP, IHC, ELISA

Cited Applications:

WB, IHC

Species Specificity:

human, mouse, rat, monkey

Cited Species:

human, mouse

Note-IHC: suggested antigen retrieval with TE buffer pH 9.0; (*) Alternatively, antigen retrieval may be performed with citrate buffer pH 6.0

Positive Controls:

WB: HL-60 cells, HeLa cells, mouse lung tissue, Jurkat cells, COS-7 cells, rat lung tissue

IP: mouse lung tissue,

IHC: human liver cancer tissue, human breast cancer tissue

Background Information

MRPL13, also named as 39S ribosomal protein L13, mitochondrial or L13mt, is a 178 amino acid protein, which belongs to the ribosomal protein L13P family. MRPL13 localizes in the mitochondrion and interacts with OXA1L. MRPL13 is involved in mitochondrial proteins biosynthesis, ribosomal structure and biogenesis.

Notable Publications

Author	Pubmed ID	Journal	Application
Ruona Shi	34774773	Genomics Proteomics Bioinformatics	WB
Ilaria Dalla Rosa	24948607	Nucleic Acids Res	WB
Miaomiao Cai	33658859	Cancer Manag Res	IHC

Storage

Storage:

Store at -20°C. Stable for one year after shipment.

Storage Buffer:

PBS with 0.02% sodium azide and 50% glycerol, pH7.3

Aliquoting is unnecessary for -20°C storage

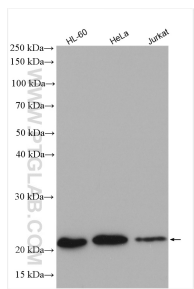
For technical support and original validation data for this product please contact:

T: 4006900926

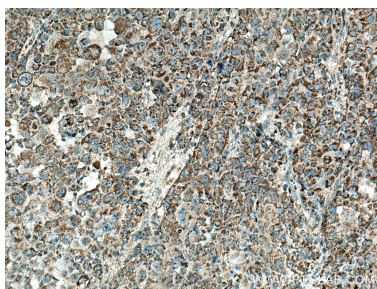
E: Proteintech-CN@ptglab.comW: ptgcn.com

This product is exclusively available under Proteintech Group brand and is not available to purchase from any other manufacturer.

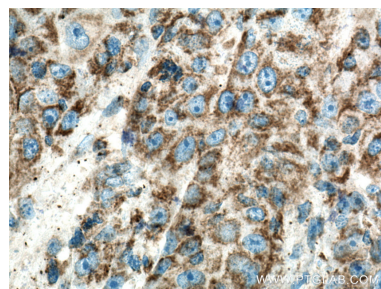
Selected Validation Data



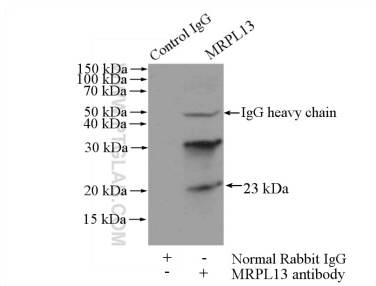
Various lysates were subjected to SDS PAGE followed by western blot with 16241-1-AP (MRPL13 antibody) at dilution of 1:1000 incubated at room temperature for 1.5 hours.



Immunohistochemical analysis of paraffin-embedded human liver cancer tissue slide using 16241-1-AP (MRPL13 antibody) at dilution of 1:200 (under 10x lens). Heat mediated antigen retrieval with Tris-EDTA buffer (pH 9.0).



Immunohistochemical analysis of paraffin-embedded human liver cancer tissue slide using 16241-1-AP (MRPL13 antibody) at dilution of 1:200 (under 40x lens). Heat mediated antigen retrieval with Tris-EDTA buffer (pH 9.0).



IP result of anti-MRPL13 (IP:16241-1-AP, 4ug; Detection:16241-1-AP 1:500) with mouse lung tissue lysate 4000ug.