

For Research Use Only

MRPS18A Polyclonal antibody

Catalog Number: 16235-1-AP

Featured Product

1 Publications



Basic Information

Catalog Number:

16235-1-AP

Size:

550 ug/ml

Source:

Rabbit

Isotype:

IgG

Immunogen Catalog Number:

AG8981

GenBank Accession Number:

BC010364

GeneID (NCBI):

55168

UNIPROT ID:

Q9NVS2

Full Name:

mitochondrial ribosomal protein

S18A

Calculated MW:

196 aa, 22 kDa

Observed MW:

18-22 kDa

Purification Method:

Antigen affinity purification

Recommended Dilutions:

WB 1:1000-1:8000

IHC 1:50-1:500

Applications

Tested Applications:

WB, IHC, ELISA

Cited Applications:

IHC

Species Specificity:

human

Cited Species:

human

Note-IHC: suggested antigen retrieval with TE buffer pH 9.0; (*) Alternatively, antigen retrieval may be performed with citrate buffer pH 6.0

Positive Controls:

WB : HeLa cells, HepG2 cells, L02 cells

IHC : human intrahepatic cholangiocarcinoma tissue, human stomach tissue

Background Information

MRPS18A (Mitochondrial Ribosomal Protein S18A) is a protein coding gene. It encodes a 28S subunit protein that belongs to the ribosomal protein S18P family. The increased expression of MRPS18A in cancer cells is explained by the increased energy metabolism of cancer cells and may pave the way for new diagnostic and therapeutic avenues to be explored (PMID: 28056857).

Notable Publications

| Author | Pubmed ID | Journal | Application |
|--------------|-----------|-----------|-------------|
| L Kovalevska | 33355869 | Exp Oncol | IHC |

Storage

Storage:

Store at -20°C. Stable for one year after shipment.

Storage Buffer:

PBS with 0.02% sodium azide and 50% glycerol pH 7.3.

Aliquoting is unnecessary for -20°C storage

For technical support and original validation data for this product please contact:

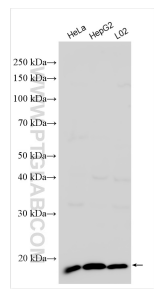
T: 4006900926

E: Proteintech-CN@ptglab.com

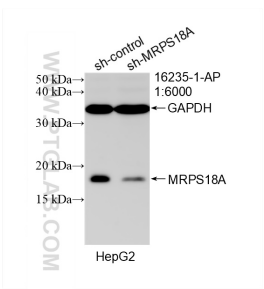
W: ptgcn.com

This product is exclusively available under Proteintech Group brand and is not available to purchase from any other manufacturer.

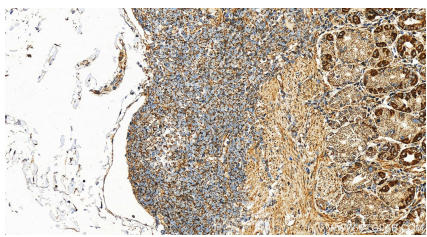
Selected Validation Data



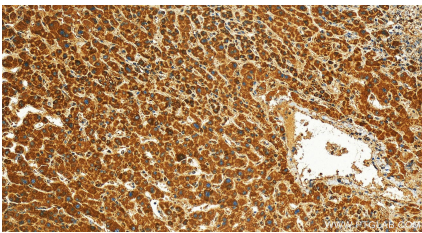
Various lysates were subjected to SDS PAGE followed by western blot with 16235-1-AP (MRPS18A antibody) at dilution of 1:4000 incubated at room temperature for 1.5 hours.



WB result of MRPS18A antibody (16235-1-AP; 1:6000; incubated at room temperature for 1.5 hours) with sh-Control and sh-MRPS18A transfected HepG2 cells.



Immunohistochemical analysis of paraffin-embedded human stomach tissue slide using 16235-1-AP (MRPS18A antibody) at dilution of 1:200 (under 20x lens). Heat mediated antigen retrieval with Tris-EDTA buffer (pH 9.0).



Immunohistochemical analysis of paraffin-embedded human intrahepatic cholangiocarcinoma tissue slide using 16235-1-AP (MRPS18A antibody) at dilution of 1:200 (under 20x lens). Heat mediated antigen retrieval with Tris-EDTA buffer (pH 9.0).