

For Research Use Only

CAP1 Polyclonal antibody, PBS Only

Catalog Number: 16231-1-PBS

Featured Product



Basic Information

Catalog Number:

16231-1-PBS

Source:

Rabbit

Isotype:

IgG

Immunogen Catalog Number:

AG8876

GenBank Accession Number:

BC013963

GeneID (NCBI):

10487

UNIPROT ID:

Q01518

Full Name:

CAP, adenylate cyclase-associated protein 1 (yeast)

Calculated MW:

475 aa, 52 kDa

Observed MW:

50-55 kDa

Purification Method:

Antigen affinity purification

Applications

Tested Applications:

WB, IHC, IP, Indirect ELISA

Species Specificity:

human, mouse, rat

Background Information

CAP1, also known as CAP, CAP1-PEN, belongs to the CAP family and contains 1 C-CAP/cofactor C-like domain. CAP1 binds to monomeric actin and regulates the actin cytoskeleton to control cell size, adhesion, and migration (PMID: 23737525). CAP1 also functions as a receptor for inflammatory cytokine resistin (PMID: 24606903). CAP1 is an abundant and ubiquitously expressed protein. Western blot analysis detected CAP1 at an apparent molecular mass of 50-55 kDa.

Storage

Storage:

Store at -80°C.

The product is shipped with ice packs. Upon receipt, store it immediately at -80°C

Storage Buffer:

PBS only, pH7.3

For technical support and original validation data for this product please contact:

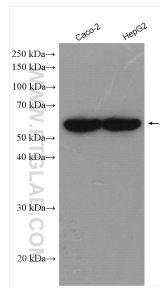
T: 4006900926

E: Proteintech-CN@ptglab.com

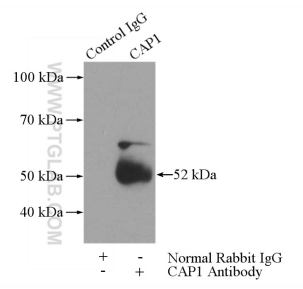
W: ptgcn.com

This product is exclusively available under Proteintech Group brand and is not available to purchase from any other manufacturer.

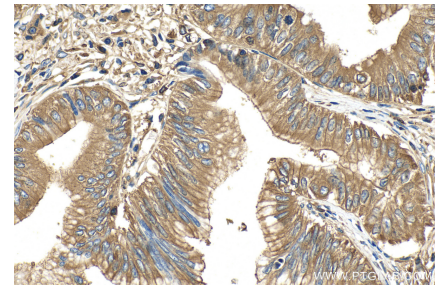
Selected Validation Data



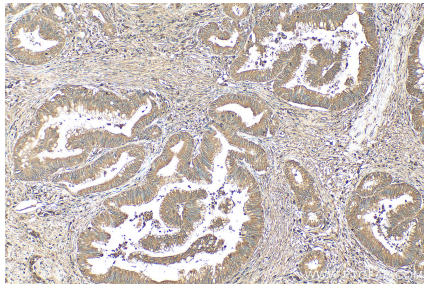
Caco-2 cells were subjected to SDS PAGE followed by western blot with 16231-1-AP (CAP1 antibody) at dilution of 1:3000 incubated at room temperature for 1.5 hours. This data was developed using the same antibody clone with 16231-1-PBS in a different storage buffer formulation.



IP result of anti-CAP1 (IP:16231-1-AP, 3ug; Detection:16231-1-AP 1:500) with A431 cells lysate 1520ug. This data was developed using the same antibody clone with 16231-1-PBS in a different storage buffer formulation.



Immunohistochemical analysis of paraffin-embedded human pancreas cancer tissue slide using 16231-1-AP (CAP1 antibody) at dilution of 1:200 (under 40x lens). Heat mediated antigen retrieval with Tris-EDTA buffer (pH 9.0). This data was developed using the same antibody clone with 16231-1-PBS in a different storage buffer formulation.



Immunohistochemical analysis of paraffin-embedded human pancreas cancer tissue slide using 16231-1-AP (CAP1 antibody) at dilution of 1:200 (under 10x lens). Heat mediated antigen retrieval with Tris-EDTA buffer (pH 9.0). This data was developed using the same antibody clone with 16231-1-PBS in a different storage buffer formulation.