

For Research Use Only

PDE4A Polyclonal antibody

Catalog Number: 16226-1-AP

Featured Product

8 Publications



Basic Information

Catalog Number:

16226-1-AP

Size:

1000 µg/ml

Source:

Rabbit

Isotype:

IgG

Immunogen Catalog Number:

AG8018

GenBank Accession Number:

BC019864

GeneID (NCBI):

5141

UNIPROT ID:

P27815

Full Name:

phosphodiesterase 4A, cAMP-specific
(phosphodiesterase E2 dunce
homolog, Drosophila)

Calculated MW:

98 kDa

Observed MW:

125-130 kDa

Purification Method:

Antigen affinity purification

Recommended Dilutions:

WB 1:500-1:2000

IP 0.5-4.0 µg for 1.0-3.0 mg of total
protein lysate

IHC 1:20-1:200

Applications

Tested Applications:

FC, IHC, IP, WB, ELISA

Cited Applications:

WB, IHC

Species Specificity:

human, mouse

Cited Species:

human, mouse

Positive Controls:

WB : human brain tissue, HeLa cells

IP : mouse brain tissue,

IHC : human placenta tissue,

**Note-IHC: suggested antigen retrieval with
TE buffer pH 9.0; (*) Alternatively, antigen
retrieval may be performed with citrate
buffer pH 6.0**

Background Information

Notable Publications

Author	Pubmed ID	Journal	Application
Peter H Schafer	31598889	Drugs R D	IHC
Menbere Wendimu	33705894	Cell Signal	WB
Thays Maria da Conceição Silva Carvalho	33807511	Int J Mol Sci	WB

Storage

Storage:

Store at -20°C. Stable for one year after shipment.

Storage Buffer:

PBS with 0.02% sodium azide and 50% glycerol pH 7.3.

Aliquoting is unnecessary for -20°C storage

For technical support and original validation data for this product please contact:

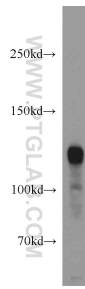
T: 4006900926

E: Proteintech-CN@ptglab.com

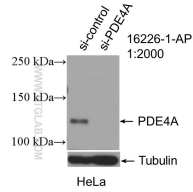
W: ptgcn.com

This product is exclusively available under Proteintech Group brand and is not available to purchase from any other manufacturer.

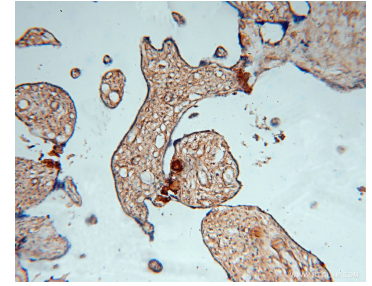
Selected Validation Data



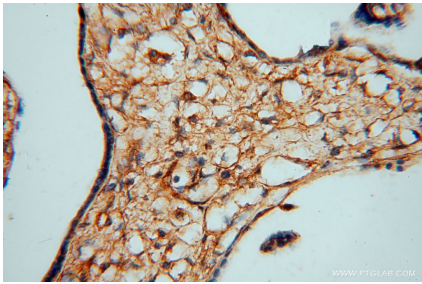
human brain tissue were subjected to SDS PAGE followed by western blot with 16226-1-AP (PDE4A antibody) at dilution of 1:1000 incubated at room temperature for 1.5 hours.



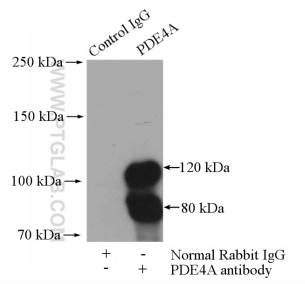
WB result of PDE4A antibody (16226-1-AP; 1:600; incubated at room temperature for 1.5 hours) with sh-Control and sh-PDE4A transfected HeLa cells.



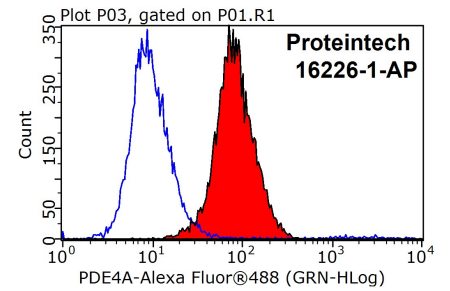
Immunohistochemical analysis of paraffin-embedded human placenta using 16226-1-AP (PDE4A antibody) at dilution of 1:50 (under 10x lens).



Immunohistochemical analysis of paraffin-embedded human placenta using 16226-1-AP (PDE4A antibody) at dilution of 1:50 (under 40x lens).



IP result of anti-PDE4A (IP:16226-1-AP, 4ug; Detection:16226-1-AP 1:300) with mouse brain tissue lysate 4000ug.



1X10⁶ SH-SY5Y cells were stained with 0.2ug PDE4A antibody (16226-1-AP, red) and control antibody (blue). Fixed with 90% MeOH blocked with 3% BSA (30 min). Alexa Fluor 488-conjugated AffiniPure Goat Anti-Rabbit IgG(H+L) with dilution 1:1000.