

For Research Use Only

# MRPL24 Polyclonal antibody

Catalog Number: 16224-1-AP

Featured Product

5 Publications



## Basic Information

Catalog Number:

16224-1-AP

Size:

500 ug/ml

Source:

Rabbit

Isotype:

IgG

Immunogen Catalog Number:

AG9277

GenBank Accession Number:

BC016700

GeneID (NCBI):

79590

UNIPROT ID:

Q96A35

Full Name:

mitochondrial ribosomal protein L24

Calculated MW:

216 aa, 25 kDa

Observed MW:

25 kDa

Purification Method:

Antigen affinity purification

Recommended Dilutions:

WB 1:1000-1:8000

IP 0.5-4.0 ug for 1.0-3.0 mg of total protein lysate

## Applications

Tested Applications:

WB, IP, ELISA

Cited Applications:

WB

Species Specificity:

human, mouse, rat

Cited Species:

human, mouse

Positive Controls:

WB : mouse liver tissue, HEK-293 cells

IP : HEK-293 cells,

## Background Information

### Notable Publications

Author	Pubmed ID	Journal	Application
Uwe Richter	26504172	J Cell Biol	WB
Henrick Horita	29786648	Proteomes	WB
Sofia Zaganelli	28082677	J Biol Chem	WB

## Storage

Storage:

Store at -20°C. Stable for one year after shipment.

Storage Buffer:

PBS with 0.02% sodium azide and 50% glycerol pH 7.3.

Aliquoting is unnecessary for -20°C storage

For technical support and original validation data for this product please contact:

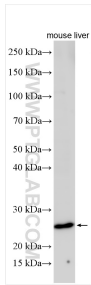
T: 4006900926

E: [Proteintech-CN@ptglab.com](mailto:Proteintech-CN@ptglab.com)

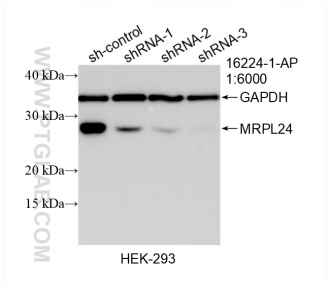
W: [ptgcn.com](http://ptgcn.com)

This product is exclusively available under Proteintech Group brand and is not available to purchase from any other manufacturer.

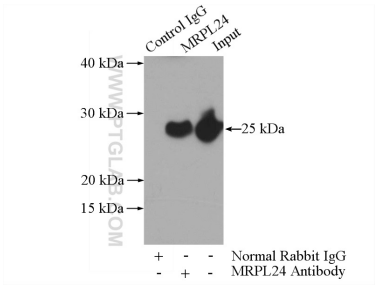
Selected Validation Data



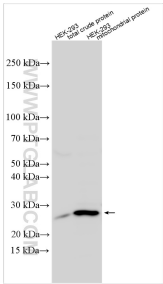
mouse liver tissue were subjected to SDS PAGE followed by western blot with 16224-1-AP (MRPL24 antibody) at dilution of 1:4000 incubated at room temperature for 1.5 hours.



WB result of MRPL24 antibody (16224-1-AP; 1:6000; incubated at room temperature for 1.5 hours) with sh-Control and sh-MRPL24 transfected HEK-293 cells.



IP result of anti-MRPL24 (IP:16224-1-AP, 4ug; Detection:16224-1-AP 1:1000) with HEK-293 cells lysate 1480ug.



Various lysates were subjected to SDS PAGE followed by western blot with 16224-1-AP (MRPL24 antibody) at dilution of 1:8000 incubated at room temperature for 1.5 hours.