

For Research Use Only

# HBB Polyclonal antibody, PBS Only

Catalog Number:16216-1-PBS



## Basic Information

Catalog Number:

16216-1-PBS

Size:

1 mg/ml

Source:

Rabbit

Isotype:

IgG

Immunogen Catalog Number:

AG9216

GenBank Accession Number:

BC007075

GeneID (NCBI):

3043

UNIPROT ID:

P68871

Full Name:

hemoglobin, beta

Calculated MW:

147 aa, 16 kDa

Observed MW:

13-16 kDa

Purification Method:

Antigen affinity purification

## Applications

Tested Applications:

WB, IHC, IF-P, FC (Intra), Indirect ELISA

Species Specificity:

human, mouse

## Background Information

The hemoglobin molecule is a tetramer consisting of two alpha- and two beta-globin-like chains. HBB gene encodes hemoglobin beta chain. The hemoglobin chains, each with its own heme moiety, cooperate in binding and release of oxygen. Hemoglobin monomers have been found in blood and other tissues including macrophages, alveolar epithelial cells and brain. Defects in HBB have been linked to diseases including Sickle cell anemia, Beta-thalassemia, and Heinz body anemias. This antibody, raised against the full-length human HBB, recognizes the 13-16 kDa HBB in western blot analyses of human heart and placenta.

## Storage

Storage:

Store at -80°C.

**The product is shipped with ice packs. Upon receipt, store it immediately at -80°C**

Storage Buffer:

PBS Only

For technical support and original validation data for this product please contact:

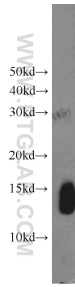
T: 4006900926

E: [Proteintech-CN@ptglab.com](mailto:Proteintech-CN@ptglab.com)

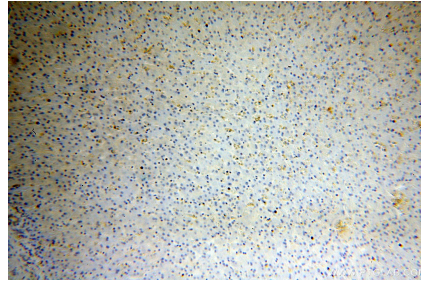
W: [ptgcn.com](http://ptgcn.com)

**This product is exclusively available under Proteintech Group brand and is not available to purchase from any other manufacturer.**

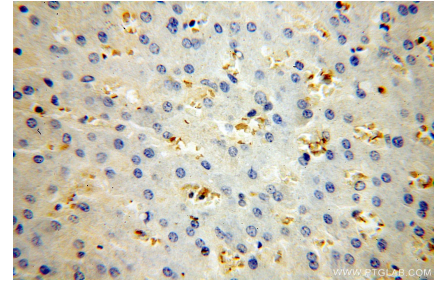
## Selected Validation Data



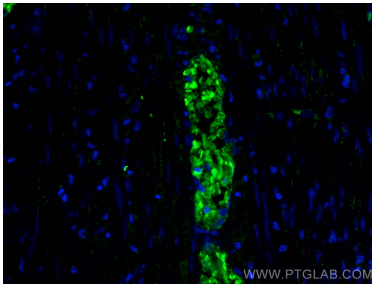
human heart tissue were subjected to SDS PAGE followed by western blot with 16216-1-AP (HBB antibody) at dilution of 1:2000 incubated at room temperature for 1.5 hours. This data was developed using the same antibody clone with 16216-1-PBS in a different storage buffer formulation.



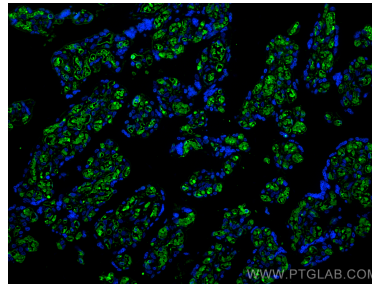
Immunohistochemical analysis of paraffin-embedded human liver using 16216-1-AP (HBB antibody) at dilution of 1:100 (under 10x lens). This data was developed using the same antibody clone with 16216-1-PBS in a different storage buffer formulation.



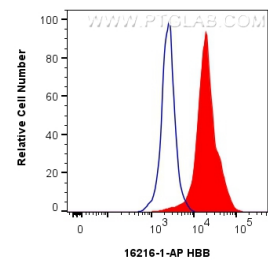
Immunohistochemical analysis of paraffin-embedded human liver using 16216-1-AP (HBB antibody) at dilution of 1:100 (under 40x lens). This data was developed using the same antibody clone with 16216-1-PBS in a different storage buffer formulation.



Immunofluorescent analysis of (4% PFA) fixed human appendicitis tissue using HBB antibody (16216-1-AP) at dilution of 1:200 and CoraLite®488-Conjugated AffiniPure Goat Anti-Rabbit IgG(H+L). This data was developed using the same antibody clone with 16216-1-PBS in a different storage buffer formulation.



Immunofluorescent analysis of (4% PFA) fixed paraffin-embedded human placenta tissue using HBB antibody (16216-1-AP) at dilution of 1:200 and CoraLite®488-Conjugated Goat Anti-Rabbit IgG(H+L) (SA00013-2). Heat mediated antigen retrieval with Tris-EDTA buffer (pH 9.0). This data was developed using the same antibody clone with 16216-1-PBS in a different storage buffer formulation.



1X10<sup>6</sup> K-562 cells were intracellularly stained with 0.8 ug Anti-Human HBB (16216-1-AP) and CoraLite®488-Conjugated AffiniPure Goat Anti-Rabbit IgG(H+L) at dilution 1:1000 (red), or 0.8 ug Rabbit IgG control Rabbit PolyAb (30000-0-AP, Clone: ) (blue). Cells were fixed with 4% PFA and permeabilized with Flow Cytometry Perm Buffer (PF00011-C). This data was developed using the same antibody clone with 16216-1-PBS in a different storage buffer formulation.