

For Research Use Only

MAP3K6 Polyclonal antibody

Catalog Number: 16212-1-AP



Basic Information

Catalog Number: 16212-1-AP	GenBank Accession Number: BC015914	Purification Method: Antigen affinity purification
Size: 400 ug/ml	GeneID (NCBI): 9064	Recommended Dilutions: IHC 1:100-1:400 IF/ICC 1:200-1:800
Source: Rabbit	UNIPROT ID: O95382	
Isotype: IgG	Full Name: mitogen-activated protein kinase kinase kinase 6	
Immunogen Catalog Number: AG9206	Calculated MW: 1148aa, 128 kDa; 1011aa, 113 kDa; 797aa, 89 kDa Observed MW: 88 kDa	

Applications

Tested Applications: IHC, IF/ICC, ELISA	Positive Controls:
Species Specificity: human, mouse, rat	IHC : human liver tissue, human liver cancer tissue IF/ICC : HeLa cells,

Note-IHC: suggested antigen retrieval with TE buffer pH 9.0; (*) Alternatively, antigen retrieval may be performed with citrate buffer pH 6.0

Background Information

Storage

Storage:
Store at -20°C. Stable for one year after shipment.
Storage Buffer:
PBS with 0.02% sodium azide and 50% glycerol pH 7.3.
Aliquoting is unnecessary for -20°C storage

For technical support and original validation data for this product please contact:

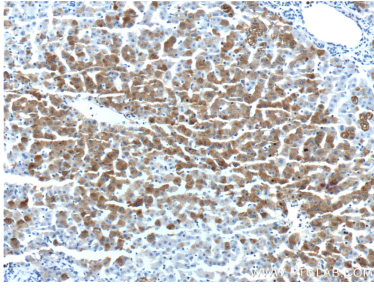
T: 4006900926

E: Proteintech-CN@ptglab.com

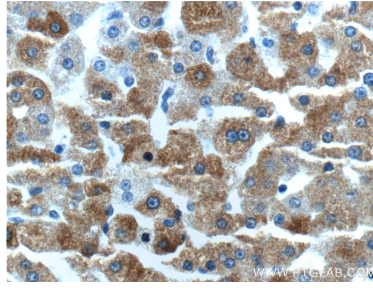
W: ptgcn.com

This product is exclusively available under Proteintech Group brand and is not available to purchase from any other manufacturer.

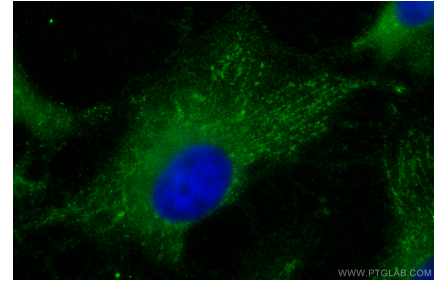
Selected Validation Data



Immunohistochemical analysis of paraffin-embedded human liver tissue slide using 16212-1-AP (MAP3K6 Antibody) at dilution of 1:200 (under 10x lens).



Immunohistochemical analysis of paraffin-embedded human liver tissue slide using 16212-1-AP (MAP3K6 Antibody) at dilution of 1:200 (under 40x lens).



Immunofluorescent analysis of (-20°C Methanol) fixed HeLa cells using MAP3K6 antibody (16212-1-AP) at dilution of 1:400 and CoraLite®488-Conjugated AffiniPure Goat Anti-Rabbit IgG(H+L).