

For Research Use Only

# TOE1 Polyclonal antibody

Catalog Number: 16203-1-AP

Featured Product

2 Publications



## Basic Information

Catalog Number:

16203-1-AP

Concentration:

500 ug/ml

Source:

Rabbit

Isotype:

IgG

Immunogen Catalog Number:

AG9172

GenBank Accession Number:

BC009364

GeneID (NCBI):

114034

UNIPROT ID:

Q96GM8

Full Name:

target of EGR1, member 1 (nuclear)

Calculated MW:

510 aa, 57 kDa

Observed MW:

57 kDa

Purification Method:

Antigen affinity purification

Recommended Dilutions:

WB: 1:1000-1:5000

IF/ICC: 1:200-1:800

## Applications

Tested Applications:

WB, IF/ICC, ELISA

Cited Applications:

WB, IF

Species Specificity:

human, mouse

Cited Species:

human, mouse

Positive Controls:

WB : HEK-293 cells, mouse thymus tissue, HeLa cells, K-562 cells, Jurkat cells

IF/ICC : HeLa cells,

## Background Information

TOE1, also known as hCaf1z, belongs to the DEDD family of deadenylases. TOE1 was initially identified as a direct target gene of ERG1, an immediate early transcription factor. TOE1 encodes an Asp-Glu-Asp-Asp deadenylase that specifically localizes to Cajal bodies in the nucleus, where assembly and maturation of small nuclear ribonucleoprotein particles, and telomerase ribonucleoprotein complex take place (PMID: 36257135). TOE1 has 2 isoforms with the molecular mass of 48 and 57 kDa.

## Notable Publications

Author	Pubmed ID	Journal	Application
Hongcheng Wang	36257135	Theriogenology	IF
Xiao-Lin Sun	39657841	Biochim Biophys Acta Gen Subj	WB

## Storage

Storage:

Store at -20°C. Stable for one year after shipment.

Storage Buffer:

PBS with 0.02% sodium azide and 50% glycerol, pH7.3

Aliquoting is unnecessary for -20°C storage

For technical support and original validation data for this product please contact:

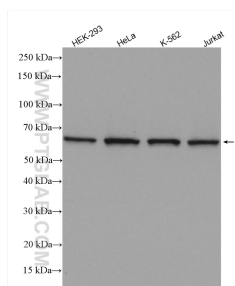
T: 4006900926

E: [Proteintech-CN@ptglab.com](mailto:Proteintech-CN@ptglab.com)

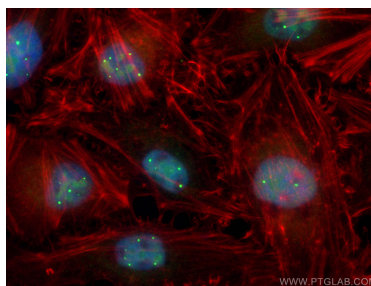
W: [ptgcn.com](http://ptgcn.com)

This product is exclusively available under Proteintech Group brand and is not available to purchase from any other manufacturer.

## Selected Validation Data



Various lysates were subjected to SDS PAGE followed by western blot with 16203-1-AP (TOE1 antibody) at dilution of 1:2500 incubated at room temperature for 1.5 hours.



Immunofluorescent analysis of (4% PFA) fixed HeLa cells using TOE1 antibody (16203-1-AP) at dilution of 1:400 and CoraLite®488-Conjugated AffiniPure Goat Anti-Rabbit IgG(H+L) (SA00013-2), CL594-phalloidin (red).