

For Research Use Only

PLEKHM1 Polyclonal antibody

Catalog Number: 16202-1-AP

3 Publications



Basic Information

Catalog Number:

16202-1-AP

Source:

Rabbit

Isotype:

IgG

Immunogen Catalog Number:

AG9145

GenBank Accession Number:

BC064361

GeneID (NCBI):

9842

UNIPROT ID:

Q9Y4G2

Full Name:

pleckstrin homology domain
containing, family M (with RUN
domain) member 1

Calculated MW:

117 kDa

Observed MW:

117 kDa

Purification Method:

Antigen affinity purification

Recommended Dilutions:

WB: 1:500-1:2000

IHC: 1:50-1:500

Applications

Tested Applications:

WB, IHC, ELISA

Cited Applications:

WB

Species Specificity:

human, mouse, rat

Cited Species:

human, mouse

Positive Controls:

WB : ROS1728 cells, mouse liver tissue

IHC : mouse kidney tissue, human liver cancer tissue,
human breast cancer tissue

**Note-IHC: suggested antigen retrieval with
TE buffer pH 9.0; (*) Alternatively, antigen
retrieval may be performed with citrate
buffer pH 6.0**

Background Information

PLEKHM1, also known as AP162, OPTB6, belongs to the Pleckstrin homology domain protein family. PLEKHM1 functions as a multivalent adapter protein that regulates Rab7-dependent and HOPS complex-dependent fusion events within the endolysosomal system, thereby coupling autophagic and endocytic trafficking pathways. In osteoclasts, PLEKHM1 is crucial for bone resorption by regulating the vesicle transport process and ensuring the formation of the ruffled border.

Notable Publications

Author	Pubmed ID	Journal	Application
Hongkun Lin	35277017	Nutrients	WB
Shi-Ao Ding	38797732	Cell Biol Toxicol	
Wang Zheng	35913916	Autophagy	WB

Storage

Storage:

Store at -20°C. Stable for one year after shipment.

Storage Buffer:

PBS with 0.02% sodium azide and 50% glycerol, pH7.3

Aliquoting is unnecessary for -20°C storage

For technical support and original validation data for this product please contact:

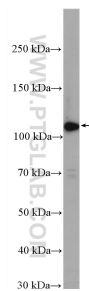
T: 4006900926

E: Proteintech-CN@ptglab.com

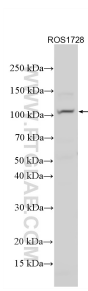
W: ptgcn.com

This product is exclusively available under Proteintech Group brand and is not available to purchase from any other manufacturer.

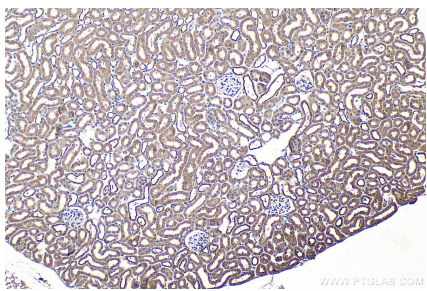
Selected Validation Data



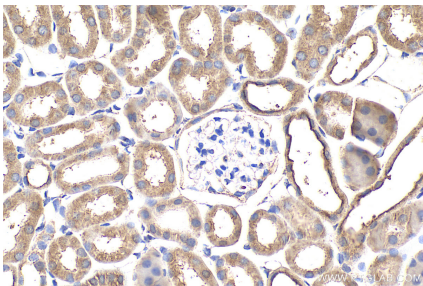
ROS1728 cells were subjected to SDS PAGE followed by western blot with 16202-1-AP (PLEKHM1 antibody) at dilution of 1:300 incubated at room temperature for 1.5 hours.



Various lysates were subjected to SDS PAGE followed by western blot with 16202-1-AP (PLEKHM1 antibody) at dilution of 1:1000 incubated at room temperature for 1.5 hours.



Immunohistochemical analysis of paraffin-embedded mouse kidney tissue slide using 16202-1-AP (PLEKHM1 antibody) at dilution of 1:200 (under 10x lens). Heat mediated antigen retrieval with Tris-EDTA buffer (pH 9.0).



Immunohistochemical analysis of paraffin-embedded mouse kidney tissue slide using 16202-1-AP (PLEKHM1 antibody) at dilution of 1:200 (under 40x lens). Heat mediated antigen retrieval with Tris-EDTA buffer (pH 9.0).