

For Research Use Only

ALAS1 Polyclonal antibody

Catalog Number: 16200-1-AP **8 Publications**



Basic Information

Catalog Number: 16200-1-AP	GenBank Accession Number: BC011798	Purification Method: Antigen affinity purification
Size: 350 µg/ml	GeneID (NCBI): 211	Recommended Dilutions: WB 1:1000-1:4000 IF 1:50-1:500
Source: Rabbit	UNIPROT ID: P13196	
Isotype: IgG	Full Name: aminolevulinate, delta-, synthase 1	
Immunogen Catalog Number: AG9126	Calculated MW: 640 aa, 71 kDa	
	Observed MW: 70 kDa	

Applications

Tested Applications: IF/ICC, WB, ELISA	Positive Controls: WB : HeLa cells, Raji cells IF : HepG2 cells,
Cited Applications: WB, IF	
Species Specificity: human, mouse, rat	
Cited Species: human, rat, mouse	

Background Information

Notable Publications

Author	Pubmed ID	Journal	Application
Ying Wang	34707288	Nature	WB
Zuoyan Wang	33656082	Arq Bras Cardiol	WB
Jingwei Zhang	34249128	Evid Based Complement Alternat Med	WB

Storage

Storage:
Store at -20°C. Stable for one year after shipment.
Storage Buffer:
PBS with 0.02% sodium azide and 50% glycerol pH 7.3.
Aliquoting is unnecessary for -20°C storage

For technical support and original validation data for this product please contact:

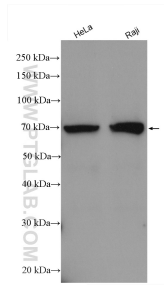
T: 4006900926

E: Proteintech-CN@ptglab.com

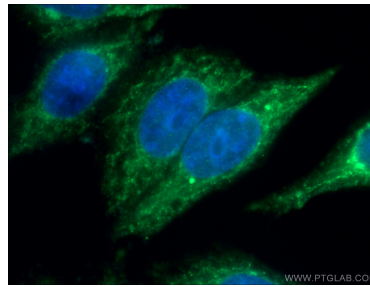
W: ptgcn.com

This product is exclusively available under Proteintech Group brand and is not available to purchase from any other manufacturer.

Selected Validation Data



Various lysates were subjected to SDS PAGE followed by western blot with 16200-1-AP (ALAS1 antibody) at dilution of 1:2000 incubated at room temperature for 1.5 hours.



Immunofluorescent analysis of (-20°C Ethanol) fixed HepG2 cells using 16200-1-AP (ALAS1 antibody) at dilution of 1:50 and Alexa Fluor 488-conjugated AffiniPure Goat Anti-Rabbit IgG(H+L).