

For Research Use Only

# FRK Polyclonal antibody

Catalog Number: 16197-1-AP

2 Publications



## Basic Information

Catalog Number:

16197-1-AP

Concentration:

1000 µg/ml

Source:

Rabbit

Isotype:

IgG

Immunogen Catalog Number:

AG10372

GenBank Accession Number:

BC012916

GeneID (NCBI):

2444

UNIPROT ID:

P42685

Full Name:

fyn-related kinase

Calculated MW:

505 aa, 56 kDa

Observed MW:

54-57 kDa

Purification Method:

Antigen affinity purification

Recommended Dilutions:

WB 1:500-1:2000

IF/ICC 1:10-1:100

## Applications

Tested Applications:

WB, IF/ICC, ELISA

Cited Applications:

WB

Species Specificity:

human, mouse, rat

Cited Species:

human, mouse

Positive Controls:

WB : mouse kidney tissue, rat kidney tissue

IF/ICC : HepG2 cells,

## Background Information

The fyn-related kinase (FRK) belongs to the tyrosine kinase family of protein kinases and is also named PTK5 (protein-tyrosine kinase 5), RAK(Nuclear tyrosine protein kinase). The Frk is a tyrosine kinase expressed in various tissues, such as the gastrointestinal tract and pancreatic islet cells. It affects pancreatic beta cell number during embryogenesis and promotes beta cell cytotoxic signals in response to streptozotocin(PMID:20157399). It may function as a tumor suppressor(PMID:19345329).

## Notable Publications

Author	Pubmed ID	Journal	Application
Biao Wang	39832042	Discov Oncol	WB
Yuxin Tan	38705564	Cancer Lett	WB

## Storage

Storage:

Store at -20°C. Stable for one year after shipment.

Storage Buffer:

PBS with 0.02% sodium azide and 50% glycerol pH 7.3.

Aliquoting is unnecessary for -20°C storage

For technical support and original validation data for this product please contact:

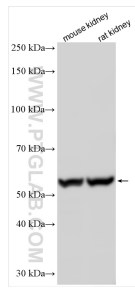
T: 4006900926

E: [Proteintech-CN@ptglab.com](mailto:Proteintech-CN@ptglab.com)

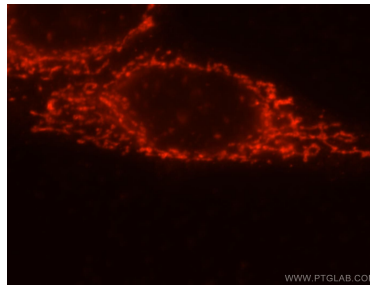
W: [ptgcn.com](http://ptgcn.com)

This product is exclusively available under Proteintech Group brand and is not available to purchase from any other manufacturer.

## Selected Validation Data



Various lysates were subjected to SDS PAGE followed by western blot with 16197-1-AP (FRL antibody) at dilution of 1:1000 incubated at room temperature for 1.5 hours.



Immunofluorescent analysis of HepG2 cells, using FRL antibody 16197-1-AP at 1:25 dilution and Rhodamine-labeled goat anti-rabbit IgG (red).