

ING1-specific Polyclonal antibody

Catalog Number: 16185-1-AP

1 Publications

Basic Information

Catalog Number:

16185-1-AP

Size:

133 µg/ml

Source:

Rabbit

Isotype:

IgG

GenBank Accession Number:

NM_198218

GeneID (NCBI):

3621

UNIPROT ID:

Q9UK53

Full Name:

inhibitor of growth family, member 1

Calculated MW:

47 kDa

Observed MW:

30 kDa

Purification Method:

Antigen affinity purification

Recommended Dilutions:

WB 1:500-1:1000

IP 0.5-4.0 µg for 1.0-3.0 mg of total protein lysate

Applications

Tested Applications:

IP, WB, ELISA

Species Specificity:

human, mouse

Cited Species:rat¹**Positive Controls:**

WB : human heart tissue,

IP : mouse heart tissue,

Background Information

Members of inhibitor of growth (ING) family function in inhibiting cell growth and inducing apoptosis. They are sequence homologous proteins. ING1 is the first identified one, interacting with TP53 and is a component of the p53 signaling pathway. Multiple alternatively spliced transcript variants encoding distinct isoforms of ING1 have been reported. This antibody recognizes all 24/33/47kd isoforms of ING1, but will not bind ING2, 3 or 4.

Storage

Storage:

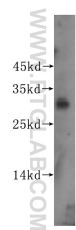
Store at -20°C. Stable for one year after shipment.

Storage Buffer:

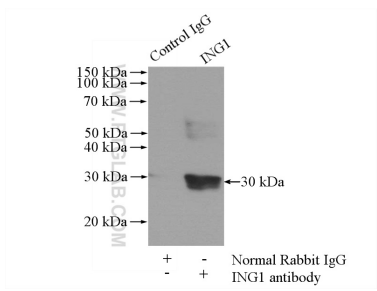
PBS with 0.02% sodium azide and 50% glycerol pH 7.3.

Aliquoting is unnecessary for -20°C storage

Selected Validation Data



human heart tissue were subjected to SDS PAGE followed by western blot with 16185-1-AP (ING1-specific antibody) at dilution of 1:300 incubated at room temperature for 1.5 hours.



IP result of anti-ING1-specific (IP:16185-1-AP, 2ug; Detection:16185-1-AP 1:300) with mouse heart tissue lysate 4000ug.