

For Research Use Only

RAB22A-specific Polyclonal antibody



Catalog Number: 16181-1-AP

1 Publications

Basic Information

Catalog Number:

16181-1-AP

Size:

133 µg/ml

Source:

Rabbit

Isotype:

IgG

GenBank Accession Number:

NM_020673

GeneID (NCBI):

57403

UNIPROT ID:

Q9UL26

Full Name:

RAB22A, member RAS oncogene family

Calculated MW:

22 kDa

Observed MW:

22 kDa

Purification Method:

Antigen affinity purification

Recommended Dilutions:

WB 1:500-1:1000

Applications

Tested Applications:

WB, ELISA

Species Specificity:

human, mouse

Positive Controls:

WB : human kidney tissue, HEK-293 cells

Background Information

The protein is a member of the RAB family of small GTPases. It localizes in the MHCI-containing recycling endosomal tubules and function in endocytic pathway. It shares 81% identity with RAB31. This antibody can specifically bind RAB22a.

Notable Publications

Author	Pubmed ID	Journal	Application
Liang Sun	30272274	Int J Oncol	

Storage

Storage:

Store at -20°C. Stable for one year after shipment.

Storage Buffer:

PBS with 0.02% sodium azide and 50% glycerol pH 7.3.

Aliquoting is unnecessary for -20°C storage

For technical support and original validation data for this product please contact:

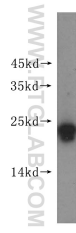
T: 4006900926

E: Proteintech-CN@ptglab.com

W: ptgcn.com

This product is exclusively available under Proteintech Group brand and is not available to purchase from any other manufacturer.

Selected Validation Data



human kidney tissue were subjected to SDS PAGE followed by western blot with 16181-1-AP (RAB22A-specific antibody) at dilution of 1:300 incubated at room temperature for 1.5 hours.