

For Research Use Only

MYPN-Specific Polyclonal antibody, PBS Only

Catalog Number: 16180-1-PBS



Basic Information

Catalog Number:

16180-1-PBS

Source:

Rabbit

Isotype:

IgG

GenBank Accession Number:

NM_032578

GeneID (NCBI):

84665

UNIPROT ID:

Q86TC9

Full Name:

myopalladin

Calculated MW:

145 kDa

Observed MW:

145 kDa

Purification Method:

Antigen affinity purification

Applications

Tested Applications:

WB, IHC, IF/ICC, Indirect ELISA

Species Specificity:

human

Background Information

MYPN is a component of the sarcomere that tethers nebulin in skeletal muscle and nebulin in cardiac muscle to alpha-actinin at the Z lines (from OMIM). Myopalladin and palladin share C-terminal fragment in sequence. While myopalladin are most abundant in skeletal and cardiac muscle, palladin is ubiquitously expressed in the organs of developing vertebrates. This antibody is specific to myopalladin.

Storage

Storage:

Store at -80°C.

The product is shipped with ice packs. Upon receipt, store it immediately at -80°C

Storage Buffer:

PBS only, pH7.3

For technical support and original validation data for this product please contact:

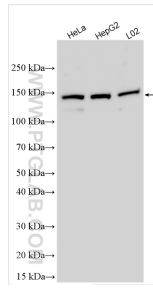
T: 4006900926

E: Proteintech-CN@ptglab.com

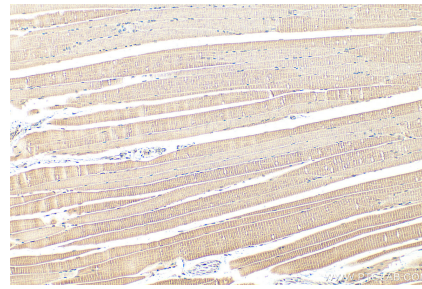
W: ptgcn.com

This product is exclusively available under Proteintech Group brand and is not available to purchase from any other manufacturer.

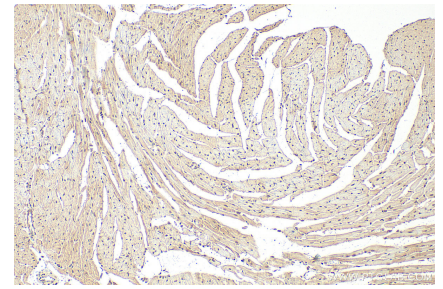
Selected Validation Data



Various lysates were subjected to SDS PAGE followed by western blot with 16180-1-AP (MYPN-Specific antibody) at dilution of 1:1000 incubated at room temperature for 1.5 hours. This data was developed using the same antibody clone with 16180-1-PBS in a different storage buffer formulation.



Immunohistochemical analysis of paraffin-embedded mouse skeletal muscle tissue slide using 16180-1-AP (MYPN-Specific antibody) at dilution of 1:200 (under 10x lens). Heat mediated antigen retrieval with Tris-EDTA buffer (pH 9.0). This data was developed using the same antibody clone with 16180-1-PBS in a different storage buffer formulation.



Immunohistochemical analysis of paraffin-embedded mouse heart tissue slide using 16180-1-AP (MYPN-Specific antibody) at dilution of 1:200 (under 10x lens). Heat mediated antigen retrieval with Tris-EDTA buffer (pH 9.0). This data was developed using the same antibody clone with 16180-1-PBS in a different storage buffer formulation.



Immunofluorescent analysis of (4% PFA) fixed HepG2 cells using MYPN-Specific antibody (16180-1-AP) at dilution of 1:200 and CoraLite®488-Conjugated Goat Anti-Rabbit IgG(H+L) (SA00013-2), CL594-phalloidin (red). This data was developed using the same antibody clone with 16180-1-PBS in a different storage buffer formulation.