

For Research Use Only

# Lin28A-specific Polyclonal antibody

Catalog Number: 16177-1-AP

Featured Product

11 Publications



## Basic Information

Catalog Number:

16177-1-AP

Concentration:

253 ug/ml

Source:

Rabbit

Isotype:

IgG

GenBank Accession Number:

NM\_024674

GeneID (NCBI):

79727

UNIPROT ID:

Q9H9Z2

Full Name:

lin-28 homolog (C. elegans)

Calculated MW:

23 kDa

Observed MW:

28 kDa

Purification Method:

Antigen affinity purification

Recommended Dilutions:

WB 1:200-1:1000

IHC 1:20-1:200

## Applications

Tested Applications:

WB, IHC, ELISA

Cited Applications:

WB, IHC, IF

Species Specificity:

human, mouse, rat

Cited Species:

human, mouse, rat

Positive Controls:

WB : hESC cells, human brain tissue, human heart tissue, NCCIT cell, mouse liver tissue

IHC : human small intestine tissue, human ovary tissue, human heart tissue, human testis tissue, human spleen tissue, human lung tissue, human brain tissue

**Note-IHC: suggested antigen retrieval with TE buffer pH 9.0; (\*) Alternatively, antigen retrieval may be performed with citrate buffer pH 6.0**

## Background Information

LIN28 is one of the four key human factors (OCT4, SOX2, NANOG and LIN28) used to reprogram human fibroblasts to an embryonic stem (ES) cell-like state known as the induced pluripotent stem (Ips) cell. LIN28 is a marker of undifferentiated human embryonic stem cells and a cytoplasmic mRNA-binding protein that binds to and enhances the translation of the IGF2 mRNA. LIN28 has also been shown to bind to the let-7 pre-miRNA and block production of the mature let-7 microRNA in mouse embryonic stem cells. Affinity purified rabbit anti-LIN28 can be used to demonstrate pluripotency of ES and Ips cells, and to detect LIN28 transgene expression in the process of reprogramming. This antibody is a rabbit polyclonal antibody raised against a peptide mapping within human LIN28. This antibody recognizes Lin28A specifically.

## Notable Publications

Author	Pubmed ID	Journal	Application
Kelvin Pieknell	34556809	Cell Death Differ	WB
Xinxin Si	36382664	Pharmacology	IHC
Yang Liu	33200449	FASEB J	WB, IF

## Storage

Storage:

Store at -20°C. Stable for one year after shipment.

Storage Buffer:

PBS with 0.02% sodium azide and 50% glycerol pH 7.3.

Aliquoting is unnecessary for -20°C storage

For technical support and original validation data for this product please contact:

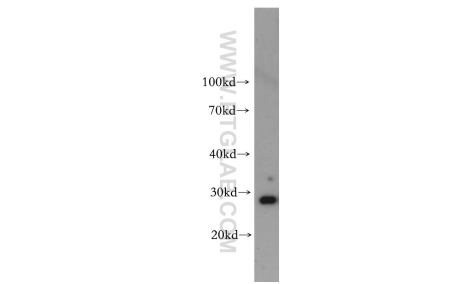
T: 4006900926

E: [Proteintech-CN@ptglab.com](mailto:Proteintech-CN@ptglab.com)

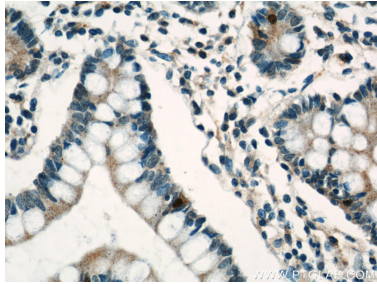
W: [ptgcn.com](http://ptgcn.com)

**This product is exclusively available under Proteintech Group brand and is not available to purchase from any other manufacturer.**

# Selected Validation Data



hESC cells were subjected to SDS PAGE followed by western blot with 16177-1-AP (Lin28A-specific antibody) at dilution of 1:300 incubated at room temperature for 1.5 hours.



Immunohistochemical analysis of paraffin-embedded human small intestine using 16177-1-AP (Lin28A-specific antibody) at dilution of 1:50 (under 40x lens).