

For Research Use Only

Presenilin-1-Specific Polyclonal antibody

Catalog Number: 16163-1-AP

Featured Product

20 Publications



Basic Information

Catalog Number:

16163-1-AP

Concentration:

500 µg/ml

Source:

Rabbit

Isotype:

IgG

GenBank Accession Number:

NM_000021

GeneID (NCBI):

5663

UNIPROT ID:

P49768

Full Name:

presenilin 1

Calculated MW:

53 kDa

Observed MW:

21 kDa, 53 kDa

Purification Method:

Antigen affinity purification

Recommended Dilutions:

WB 1:1000-1:8000

IP 0.5-4.0 µg for 1.0-3.0 mg of total protein lysate

IHC 1:500-1:2000

Applications

Tested Applications:

WB, IP, IHC, ELISA

Cited Applications:

WB, IHC

Species Specificity:

human, mouse, rat, monkey

Cited Species:

human, mouse, rat, pig

Note-IHC: suggested antigen retrieval with TE buffer pH 9.0; (*) Alternatively, antigen retrieval may be performed with citrate buffer pH 6.0

Positive Controls:

WB: COS-7 cells, human kidney tissue, HeLa cells, HepG2 cells, Jurkat cells, rat brain tissue, mouse brain tissue

IP: mouse kidney tissue,

IHC: human prostate cancer tissue, mouse brain tissue

Background Information

PSEN1(presenilin-1) is also named as AD3, PS1, PSN1 and belongs to the peptidase A22A family. It directly influences Netrin/DCC signaling with cell type precision and spatiotemporal specificity, and is a key neural circuit builder that gates the spatiotemporal pattern of guidance signaling, thereby ensuring neural projections occur with high fidelity(PMID:21215373). The 46-kDa PSEN1 holoprotein is cleaved into a D30-kDa N-terminal fragment (NTF) and a D20-kDa C-terminal fragment (CTF) by the 26S proteasome (PMID:10527805). It has 7 isoforms produced by alternative splicing. This antibody is specific to isoform1(53 kDa), isoform2(52 kDa), isoform4(21 kDa), isoform7(49 kDa) of this protein.

Notable Publications

Author	Pubmed ID	Journal	Application
Laura Gerosa	35613587	Cell Rep	WB
Muhammad Mushtaq	29029400	Oncotarget	IHC
Xiaoqing Zhang	33723239	Cell Death Discov	WB

Storage

Storage:

Store at -20°C. Stable for one year after shipment.

Storage Buffer:

PBS with 0.02% sodium azide and 50% glycerol pH 7.3.

Aliquoting is unnecessary for -20°C storage

For technical support and original validation data for this product please contact:

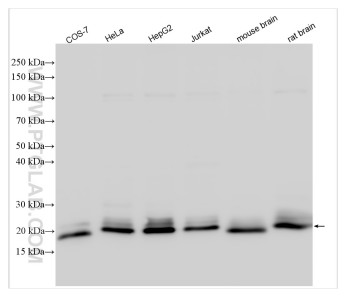
T: 4006900926

E: Proteintech-CN@ptglab.com

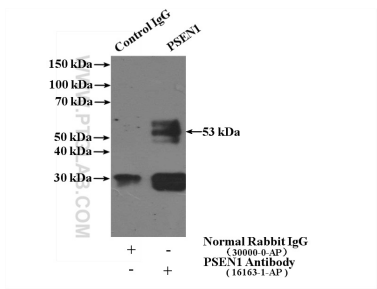
W: ptgcn.com

This product is exclusively available under Proteintech Group brand and is not available to purchase from any other manufacturer.

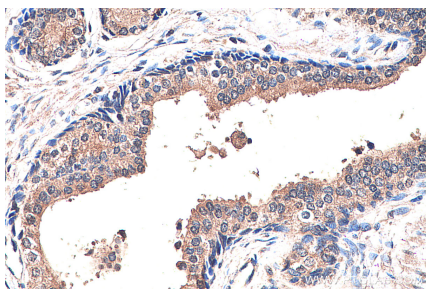
Selected Validation Data



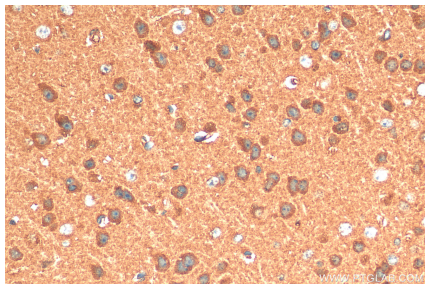
Various lysates were subjected to SDS PAGE followed by western blot with 16163-1-AP (Presenilin-1-Specific antibody) at dilution of 1:4000 incubated at room temperature for 1.5 hours.



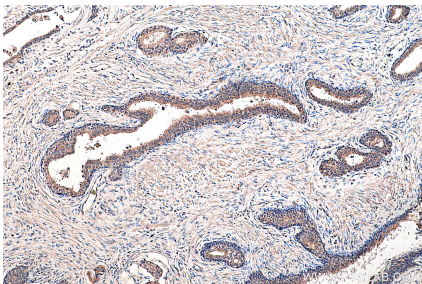
IP result of anti-Presenilin-1-Specific (IP:16163-1-AP, 4ug; Detection:16163-1-AP 1:1000) with mouse kidney tissue lysate 4000ug.



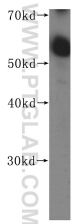
Immunohistochemical analysis of paraffin-embedded human prostate cancer tissue slide using 16163-1-AP (Presenilin-1-Specific antibody) at dilution of 1:1000 (under 40x lens). Heat mediated antigen retrieval with Tris-EDTA buffer (pH 9.0).



Immunohistochemical analysis of paraffin-embedded mouse brain tissue slide using 16163-1-AP (Presenilin-1-Specific antibody) at dilution of 1:1000 (under 40x lens). Heat mediated antigen retrieval with Tris-EDTA buffer (pH 9.0).



Immunohistochemical analysis of paraffin-embedded human prostate cancer tissue slide using 16163-1-AP (Presenilin-1-Specific antibody) at dilution of 1:1000 (under 10x lens). Heat mediated antigen retrieval with Tris-EDTA buffer (pH 9.0).



human kidney tissue were subjected to SDS PAGE followed by western blot with 16163-1-AP (Presenilin-1-Specific antibody) at dilution of 1:600 incubated at room temperature for 1.5 hours.