

For Research Use Only

# SMYD1-Specific Polyclonal antibody



Catalog Number: 16151-1-AP

1 Publications

## Basic Information

**Catalog Number:**

16151-1-AP

**Size:**

450 µg/ml

**Source:**

Rabbit

**Isotype:**

IgG

**GenBank Accession Number:**

NM\_198274

**GeneID (NCBI):**

150572

**UNIPROT ID:**

Q8NB12

**Full Name:**

SET and MYND domain containing 1

**Calculated MW:**

57 kDa

**Observed MW:**

57 kDa

**Purification Method:**

Antigen affinity purification

**Recommended Dilutions:**

WB 1:500-1:1000

IP 0.5-4.0 µg for 1.0-3.0 mg of total protein lysate

IHC 1:20-1:200

## Applications

**Tested Applications:**

IHC, IP, WB, ELISA

**Cited Applications:**

WB, IF

**Species Specificity:**

human, mouse

**Cited Species:**

mouse

**Note-IHC:** suggested antigen retrieval with **TE buffer pH 9.0;** (\*) Alternatively, antigen retrieval may be performed with **citrate buffer pH 6.0**

**Positive Controls:**

**WB:** mouse heart tissue, mouse skeletal muscle tissue

**IP:** mouse heart tissue,

**IHC:** human testis tissue, human heart tissue, human kidney tissue, human placenta tissue, human skin tissue, human liver tissue, human spleen tissue, human lung tissue, human ovary tissue, mouse heart tissue

## Background Information

### Notable Publications

Author	Pubmed ID	Journal	Application
Fang Li	37385529	Toxicol Lett	WB,IF

## Storage

**Storage:**

Store at -20°C. Stable for one year after shipment.

**Storage Buffer:**

PBS with 0.02% sodium azide and 50% glycerol pH 7.3.

Aliquoting is unnecessary for -20°C storage

For technical support and original validation data for this product please contact:

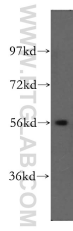
T: 4006900926

E: Proteintech-CN@ptglab.com

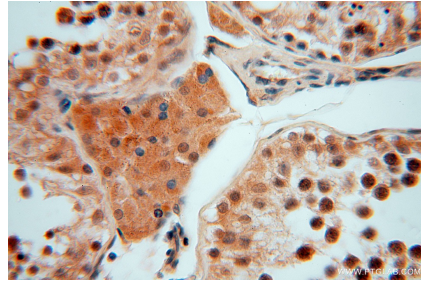
W: ptgcn.com

This product is exclusively available under Proteintech Group brand and is not available to purchase from any other manufacturer.

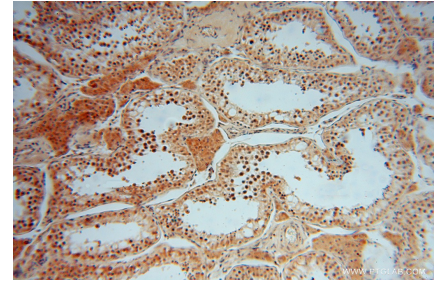
## Selected Validation Data



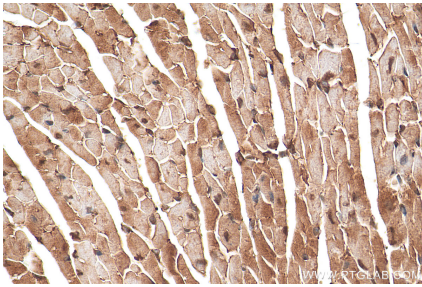
mouse heart tissue were subjected to SDS PAGE followed by western blot with 16151-1-AP (SMYD1-Specific antibody) at dilution of 1:500 incubated at room temperature for 1.5 hours.



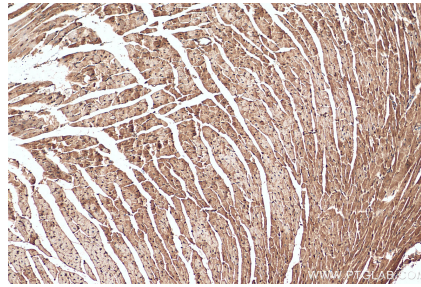
Immunohistochemical analysis of paraffin-embedded human testis using 16151-1-AP (SMYD1-Specific antibody) at dilution of 1:50 (under 40x lens).



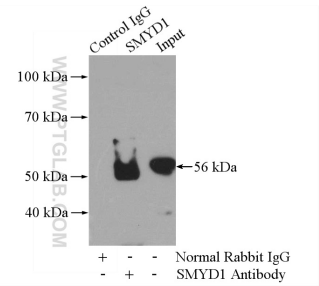
Immunohistochemical analysis of paraffin-embedded human testis using 16151-1-AP (SMYD1-Specific antibody) at dilution of 1:50 (under 10x lens).



Immunohistochemical analysis of paraffin-embedded mouse heart tissue slide using 16151-1-AP (SMYD1-Specific antibody) at dilution of 1:200 (under 10x lens). Heat mediated antigen retrieval with Tris-EDTA buffer (pH 9.0).



Immunohistochemical analysis of paraffin-embedded mouse heart tissue slide using 16151-1-AP (SMYD1-Specific antibody) at dilution of 1:200 (under 40x lens). Heat mediated antigen retrieval with Tris-EDTA buffer (pH 9.0).



IP result of anti-SMYD1-Specific (IP:16151-1-AP, 4ug; Detection:16151-1-AP 1:500) with mouse heart tissue lysate 4000ug.