

LYPLAL1 Polyclonal antibody

Catalog Number: 16146-1-AP

Featured Product

4 Publications

Basic Information

Catalog Number:

16146-1-AP

Size:

350 µg/ml

Source:

Rabbit

Isotype:

IgG

Immunogen Catalog Number:

AG9271

GenBank Accession Number:

BC016711

GeneID (NCBI):

127018

UNIPROT ID:

Q5VWZ2

Full Name:

lysophospholipase-like 1

Calculated MW:

237 aa, 26 kDa

Observed MW:

26-30 kDa

Purification Method:

Antigen affinity purification

Recommended Dilutions:

WB 1:500-1:3000

IHC 1:50-1:500

Applications

Tested Applications:

IHC, WB, ELISA

Cited Applications:

WB, IHC

Species Specificity:

human, mouse, rat

Cited Species:

human, mouse

Note-IHC: suggested antigen retrieval with TE buffer pH 9.0; (*) Alternatively, antigen retrieval may be performed with citrate buffer pH 6.0

Positive Controls:

WB: HEK-293T cells, HeLa cells

IHC: human liver cancer tissue, mouse kidney tissue, human kidney tissue

Background Information

Lysophospholipase-like 1 protein, encoded by LYPLAL1, a 26 kDa cytosol protein which belongs to a subclass of lysophospholipase family. Human genome-wide association studies link variants of the gene encoding this enzyme to fat distribution, waist-to-hip ratio and non-alcoholic fatty liver disease. LYPLAL1 reported to be up-regulated in subcutaneous adipose tissue of obese individuals. (PMID: 25958046, PMID: 27391855, PMID: 21674055)

Notable Publications

Author	Pubmed ID	Journal	Application
Bernard P Kok	32514184	Nat Chem Biol	WB
Rachel A Watson	29084768	Dis Model Mech	WB
Yizeng Fan	37802025	Mol Cell	WB, IHC

Storage

Storage:

Store at -20°C. Stable for one year after shipment.

Storage Buffer:

PBS with 0.02% sodium azide and 50% glycerol pH 7.3.

Aliquoting is unnecessary for -20°C storage

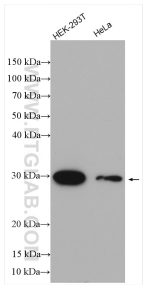
For technical support and original validation data for this product please contact:

T: 4006900926

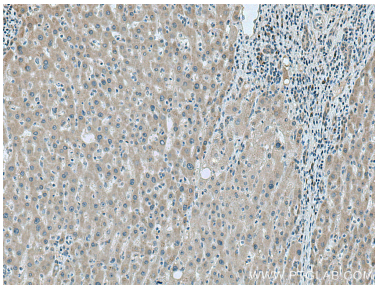
E: Proteintech-CN@ptglab.comW: ptgcn.com

This product is exclusively available under Proteintech Group brand and is not available to purchase from any other manufacturer.

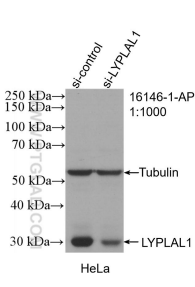
Selected Validation Data



Various lysates were subjected to SDS PAGE followed by western blot with 16146-1-AP (LYPLAL1 antibody) at dilution of 1:1500 incubated at room temperature for 1.5 hours.



Immunohistochemical analysis of paraffin-embedded human liver cancer tissue slide using 16146-1-AP (LYPLAL1 antibody) at dilution of 1:200 (under 10x lens). Heat mediated antigen retrieval with Tris-EDTA buffer (pH 9.0).



WB result of LYPLAL1 antibody (16146-1-AP; 1:1000; incubated at room temperature for 1.5 hours) with sh-Control and sh-LYPLAL1 transfected HeLa cells.