

For Research Use Only

ATP6V1G1 Polyclonal antibody

Catalog Number: 16143-1-AP

Featured Product

11 Publications



Basic Information

Catalog Number:

16143-1-AP

Size:

750 µg/ml

Source:

Rabbit

Isotype:

IgG

Immunogen Catalog Number:

AG9217

GenBank Accession Number:

BC008452

GeneID (NCBI):

9550

UNIPROT ID:

O75348

Full Name:

ATPase, H⁺ transporting, lysosomal
13kDa, V1 subunit G1

Calculated MW:

118 aa, 14 kDa

Observed MW:

14 kDa

Purification Method:

Antigen affinity purification

Recommended Dilutions:

WB 1:500-1:3000

IP 0.5-4.0 µg for 1.0-3.0 mg of total
protein lysate

IHC 1:20-1:200

IF/ICC 1:20-1:200

Applications

Tested Applications:

WB, IHC, IF/ICC, IP, ELISA

Cited Applications:

WB, IHC, IF

Species Specificity:

human, mouse, rat

Cited Species:

human, mouse, rat

**Note-IHC: suggested antigen retrieval with
TE buffer pH 9.0; (*) Alternatively, antigen
retrieval may be performed with citrate
buffer pH 6.0**

Positive Controls:

WB: Jurkat cells, human kidney tissue

IP: Jurkat cells,

IHC: human kidney tissue, human brain tissue, human
heart tissue, human liver tissue, human ovary tissue,
human placenta tissue, human skin tissue, human
spleen tissue, human testis tissue

IF/ICC: HEK-293 cells,

Background Information

Notable Publications

Author	Pubmed ID	Journal	Application
Paul T Manna	31503392	Traffic	WB
Vishwanatha K Rao	30317586	J Cell Physiol	WB
Irene Bertolini	30737083	EBioMedicine	WB, IHC

Storage

Storage:

Store at -20°C. Stable for one year after shipment.

Storage Buffer:

PBS with 0.02% sodium azide and 50% glycerol pH 7.3.

Aliquoting is unnecessary for -20°C storage

For technical support and original validation data for this product please contact:

T: 4006900926

E: Proteintech-CN@ptglab.com

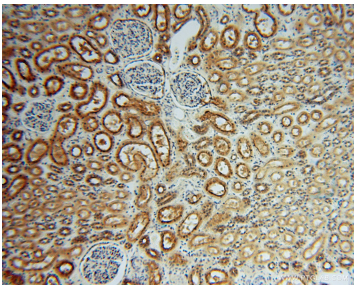
W: ptgcn.com

**This product is exclusively available under Proteintech
Group brand and is not available to purchase from any
other manufacturer.**

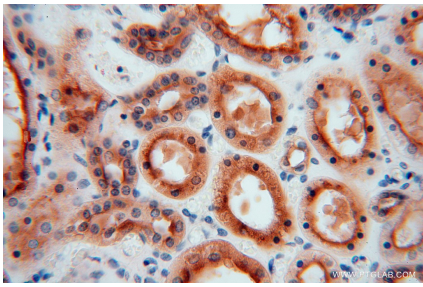
Selected Validation Data



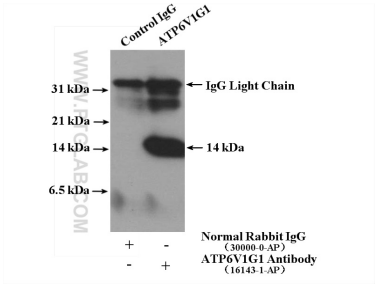
Jurkat cells were subjected to SDS PAGE followed by western blot with 16143-1-AP (ATP6V1G1 antibody) at dilution of 1:500 incubated at room temperature for 1.5 hours.



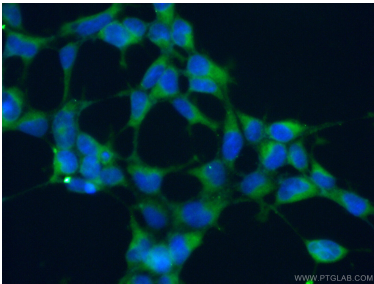
Immunohistochemical analysis of paraffin-embedded human kidney using 16143-1-AP (ATP6V1G1 antibody) at dilution of 1:100 (under 10x lens).



Immunohistochemical analysis of paraffin-embedded human kidney using 16143-1-AP (ATP6V1G1 antibody) at dilution of 1:100 (under 40x lens).



IP result of anti-ATP6V1G1 (IP:16143-1-AP, 4ug; Detection:16143-1-AP 1:500) with Jurkat cells lysate 3440 ug.



Immunofluorescent analysis of (-20°C Ethanol) fixed HEK-293 cells using 16143-1-AP (ATP6V1G1 antibody) at dilution of 1:50 and Alexa Fluor 488-conjugated Goat Anti-Rabbit IgG(H+L).