

For Research Use Only

# CAB39L Polyclonal antibody, PBS Only

Catalog Number:16137-1-PBS



## Basic Information

<b>Catalog Number:</b> 16137-1-PBS	<b>GenBank Accession Number:</b> BC010993	<b>Purification Method:</b> Antigen affinity purification
<b>Size:</b> 1 mg/ml	<b>GeneID (NCBI):</b> 81617	
<b>Source:</b> Rabbit	<b>UNIPROT ID:</b> Q9H9S4	
<b>Isotype:</b> IgG	<b>Full Name:</b> calcium binding protein 39-like	
<b>Immunogen Catalog Number:</b> AG9181	<b>Calculated MW:</b> 337 aa, 39 kDa	
	<b>Observed MW:</b> 39 kDa	

## Applications

**Tested Applications:**  
WB, IHC, IF/ICC, Indirect ELISA

**Species Specificity:**  
human

## Background Information

### Storage

**Storage:**  
Store at -80°C.  
**The product is shipped with ice packs. Upon receipt, store it immediately at -80°C**

**Storage Buffer:**  
PBS Only

For technical support and original validation data for this product please contact:

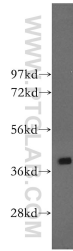
T: 4006900926

E: [Proteintech-CN@ptglab.com](mailto:Proteintech-CN@ptglab.com)

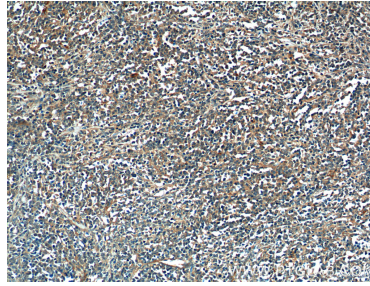
W: [ptgcn.com](http://ptgcn.com)

**This product is exclusively available under Proteintech Group brand and is not available to purchase from any other manufacturer.**

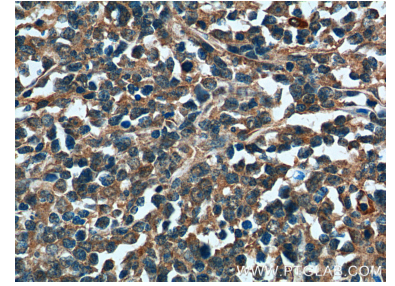
## Selected Validation Data



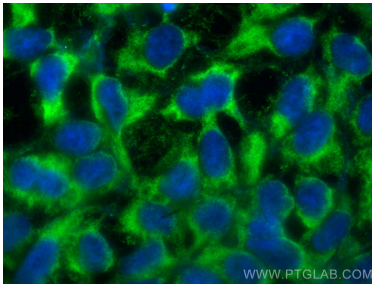
K-562 cells were subjected to SDS PAGE followed by western blot with 16137-1-AP (CAB39L antibody) at dilution of 1:400 incubated at room temperature for 1.5 hours. This data was developed using the same antibody clone with 16137-1-PBS in a different storage buffer formulation.



Immunohistochemical analysis of paraffin-embedded human lymphoma tissue slide using 16137-1-AP (CAB39L Antibody) at dilution of 1:200 (under 10x lens). This data was developed using the same antibody clone with 16137-1-PBS in a different storage buffer formulation.



Immunohistochemical analysis of paraffin-embedded human lymphoma tissue slide using 16137-1-AP (CAB39L Antibody) at dilution of 1:200 (under 40x lens). This data was developed using the same antibody clone with 16137-1-PBS in a different storage buffer formulation.



Immunofluorescent analysis of (-20°C Ethanol) fixed HEK-293 cells using CAB39L antibody (16137-1-AP) at dilution of 1:200 and CoraLite®488-Conjugated AffiniPure Goat Anti-Rabbit IgG(H+L) (SA00013-2). This data was developed using the same antibody clone with 16137-1-PBS in a different storage buffer formulation.