

# MUL1 Polyclonal antibody

Catalog Number: 16133-1-AP

Featured Product

8 Publications

## Basic Information

**Catalog Number:**

16133-1-AP

**Size:**

400 µg/ml

**Source:**

Rabbit

**Isotype:**

IgG

**Immunogen Catalog Number:**

AG9119

**GenBank Accession Number:**

BC010101

**GeneID (NCBI):**

79594

**UNIPROT ID:**

Q969V5

**Full Name:**

mitochondrial E3 ubiquitin ligase 1

**Calculated MW:**

352 aa, 40 kDa

**Observed MW:**

35 kDa

**Purification Method:**

Antigen affinity purification

**Recommended Dilutions:**

WB 1:300-1:1000

IHC 1:20-1:200

## Applications

**Tested Applications:**

IHC, WB, ELISA

**Cited Applications:**

WB, IP, CoIP

**Species Specificity:**

human, mouse, rat

**Cited Species:**

human, rat, mouse

**Note-IHC: suggested antigen retrieval with TE buffer pH 9.0; (\*) Alternatively, antigen retrieval may be performed with citrate buffer pH 6.0**

**Positive Controls:**

WB : HeLa cells,

IHC : human kidney tissue,

## Background Information

Mitochondrial ubiquitin ligase 1 (MUL1), MAPL, MULAN, or gGIDE, was identified as an E3 protein ligase by three independent groups. Work in mammalian systems shows that MUL1 has small ubiquitin-like modifier (SUMO) ligase activity, stabilizing Drp1, or ubiquitin ligase activity, degrading Mfn. MUL1 expression in mammalian cells results in smaller and more fragmented mitochondria.

## Notable Publications

Author	Pubmed ID	Journal	Application
Shu Guo	30716316	Eur J Pharmacol	WB
Shi-Jing Wang	31825666	Can J Physiol Pharmacol	CoIP
Yu Liu	36531208	Oxid Med Cell Longev	WB

## Storage

**Storage:**

Store at -20°C. Stable for one year after shipment.

**Storage Buffer:**

PBS with 0.02% sodium azide and 50% glycerol pH 7.3.

Aliquoting is unnecessary for -20°C storage

For technical support and original validation data for this product please contact:

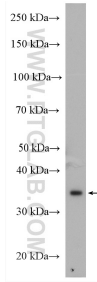
T: 4006900926

E: Proteintech-CN@ptglab.com

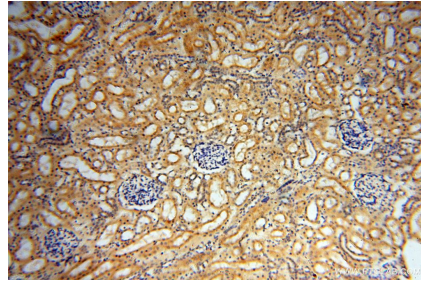
W: ptgcn.com

This product is exclusively available under Proteintech Group brand and is not available to purchase from any other manufacturer.

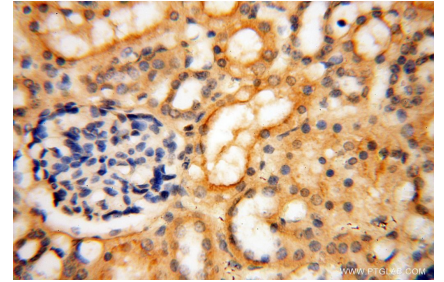
## Selected Validation Data



HeLa cells were subjected to SDS PAGE followed by western blot with 16133-1-AP (MUL1 antibody) at dilution of 1:600 incubated at room temperature for 1.5 hours.



Immunohistochemical analysis of paraffin-embedded human kidney using 16133-1-AP (MUL1 antibody) at dilution of 1:50 (under 10x lens).



Immunohistochemical analysis of paraffin-embedded human kidney using 16133-1-AP (MUL1 antibody) at dilution of 1:50 (under 40x lens).