

PPP1R8 Polyclonal antibody

Catalog Number: 16115-1-AP

Basic Information

| | | |
|--|--|--|
| Catalog Number: 16115-1-AP | GenBank Accession Number: BC013360 | Purification Method: Antigen affinity purification |
| Size: 550 µg/ml | GeneID (NCBI): 5511 | Recommended Dilutions: WB 1:500-1:1000 |
| Source: Rabbit | UNIPROT ID: Q12972 | IHC 1:20-1:200 |
| Isotype: IgG | Full Name: protein phosphatase 1, regulatory (inhibitor) subunit 8 | IF/ICC 1:50-1:500 |
| Immunogen Catalog Number: AG9041 | Calculated MW: 209 aa, 23 kDa | |
| | Observed MW: 47 kDa, 28 kDa, 19 kDa | |

Applications

Tested Applications:
WB, IHC, IF/ICC, ELISA

Species Specificity:
human, mouse, rat

Note-IHC: suggested antigen retrieval with **TE buffer pH 9.0; (*) Alternatively, antigen retrieval may be performed with citrate buffer pH 6.0**

Positive Controls:

WB: PC-3 cells, HepG2 cells

IHC: human kidney tissue, human spleen tissue, human testis tissue

IF/ICC: HepG2 cells,

Background Information

PPP1R8, also named as ARD1, NIPP1, is a 351 amino acid protein, which has a basic N- and C-terminal and an acidic central domain. PPP1R8 is ubiquitously expressed, with highest levels in heart and skeletal muscle, followed by brain, placenta, lung, liver and pancreas. PPP1R8 has RNA-binding activity but does not cleave RNA and may target PP-1 to RNA-associated substrates and may also be involved in pre-mRNA splicing. PPP1R8 exists many isoforms and molecular weight of modified isoforms is about 18 kDa, 28 kDa and 47 kDa.

Storage

Storage:

Store at -20°C. Stable for one year after shipment.

Storage Buffer:

PBS with 0.02% sodium azide and 50% glycerol pH 7.3.

Aliquoting is unnecessary for -20°C storage

For technical support and original validation data for this product please contact:

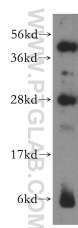
T: 4006900926

E: Proteintech-CN@ptglab.com

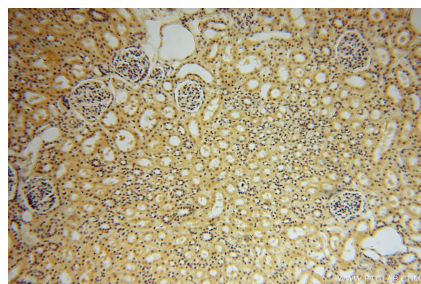
W: ptgcn.com

This product is exclusively available under Proteintech Group brand and is not available to purchase from any other manufacturer.

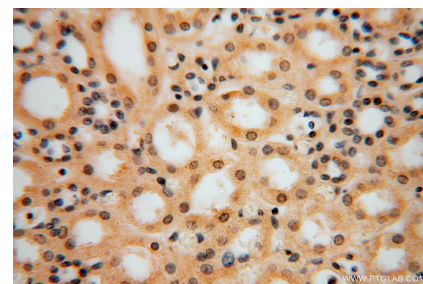
Selected Validation Data



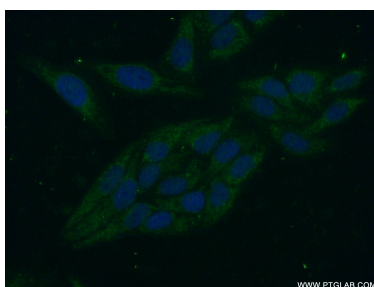
PC-3 cells were subjected to SDS PAGE followed by western blot with 16115-1-AP (PPP1R8 antibody) at dilution of 1:300 incubated at room temperature for 1.5 hours.



Immunohistochemical analysis of paraffin-embedded human kidney using 16115-1-AP (PPP1R8 antibody) at dilution of 1:50 (under 10x lens).



Immunohistochemical analysis of paraffin-embedded human kidney using 16115-1-AP (PPP1R8 antibody) at dilution of 1:50 (under 40x lens).



Immunofluorescent analysis of (-20°C Ethanol) fixed HepG2 cells using 16115-1-AP (PPP1R8 antibody) at dilution of 1:50 and Alexa Fluor 488-conjugated AffiniPure Goat Anti-Rabbit IgG(H+L).