

MTHFD1L Polyclonal antibody

Catalog Number: 16113-1-AP

Featured Product

19 Publications

Basic Information

Catalog Number:

16113-1-AP

Size:

500 µg/ml

Source:

Rabbit

Isotype:

IgG

Immunogen Catalog Number:

AG9036

GenBank Accession Number:

BC017477

GeneID (NCBI):

25902

UNIPROT ID:

Q6UB35

Full Name:

methylene tetrahydrofolate dehydrogenase (NADP+ dependent) 1-like

Calculated MW:

978 aa, 106 kDa

Observed MW:

106 kDa

Purification Method:

Antigen affinity purification

Recommended Dilutions:

WB 1:2000-1:10000

IP 0.5-4.0 µg for 1.0-3.0 mg of total protein lysate

IHC 1:50-1:500

IF/ICC 1:50-1:500

Applications

Tested Applications:

WB, IHC, IF/ICC, IP, ELISA

Cited Applications:

WB, IHC

Species Specificity:

human, mouse, rat

Cited Species:

human, mouse

Note-IHC: suggested antigen retrieval with TE buffer pH 9.0; (*) Alternatively, antigen retrieval may be performed with citrate buffer pH 6.0

Positive Controls:

WB : HEK-293 cells, COLO 320 cells, mouse ovary tissue, HeLa cells, HepG2 cells

IP : HeLa cells,

IHC : human liver cancer tissue,

IF/ICC : HepG2 cells,

Background Information

MTHFD1L (Monofunctional C1-tetrahydrofolate synthase, mitochondrial) is also named as FTHFSDC1 (Formyltetrahydrofolate synthetase). MTHFD1L enzyme is present in mitochondria from normal embryonic tissues and embryonic fibroblast cell lines, and embryonic mitochondria possess the ability to synthesize formate from glycine. It catalyzes the final step in the mitochondrial conversion of 1-C units to formate in embryos. Moreover, MTHFD1L levels were substantially higher in embryonic mitochondria than in adult liver mitochondria and embryonic mitochondria exhibited greater formate production (PMID:19948730). It has 2 isoforms produced by alternative splicing.

Notable Publications

Author	Pubmed ID	Journal	Application
Costas Koufaris	30275950	Cancer Metab	WB
Li Cui	34533844	J Pineal Res	WB, IHC
Saara Forsström	31523008	Cell Metab	WB

Storage

Storage:

Store at -20°C. Stable for one year after shipment.

Storage Buffer:

PBS with 0.02% sodium azide and 50% glycerol pH 7.3.

Aliquoting is unnecessary for -20°C storage

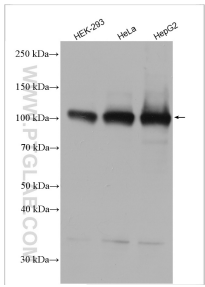
For technical support and original validation data for this product please contact:

T: 4006900926

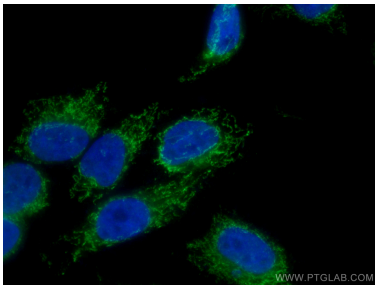
E: Proteintech-CN@ptglab.comW: ptgcn.com

This product is exclusively available under Proteintech Group brand and is not available to purchase from any other manufacturer.

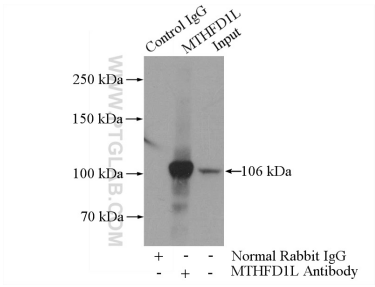
Selected Validation Data



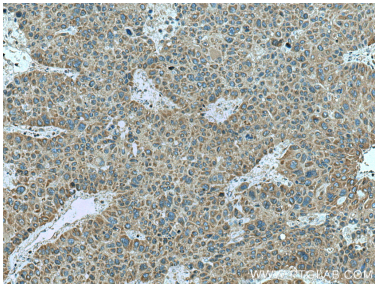
Various lysates were subjected to SDS PAGE followed by western blot with 16113-1-AP (MTHFD1L antibody) at dilution of 1:5000 incubated at room temperature for 1.5 hours.



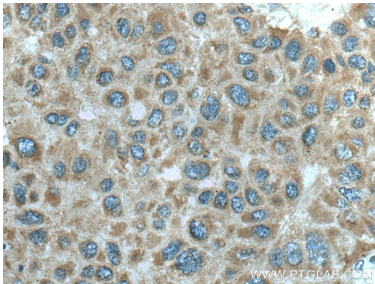
Immunofluorescent analysis of (4% PFA) fixed HepG2 cells using 16113-1-AP (MTHFD1L antibody) at dilution of 1:100 and CoraLite488-Conjugated AffiniPure Goat Anti-Rabbit IgG(H+L).



IP result of anti-MTHFD1L (IP:16113-1-AP, 4ug; Detection:16113-1-AP 1:1000) with HeLa cells lysate 2000ug.



Immunohistochemical analysis of paraffin-embedded human liver cancer tissue slide using 16113-1-AP (MTHFD1L antibody) at dilution of 1:200 (under 10x lens). Heat mediated antigen retrieval with Tris-EDTA buffer (pH 9.0).



Immunohistochemical analysis of paraffin-embedded human liver cancer tissue slide using 16113-1-AP (MTHFD1L antibody) at dilution of 1:200 (under 40x lens). Heat mediated antigen retrieval with Tris-EDTA buffer (pH 9.0).