

For Research Use Only

# ERGIC1 Polyclonal antibody

Catalog Number: 16108-1-AP

Featured Product

3 Publications



## Basic Information

**Catalog Number:**

16108-1-AP

**Size:**

300 µg/ml

**Source:**

Rabbit

**Isotype:**

IgG

**Immunogen Catalog Number:**

AG9025

**GenBank Accession Number:**

BC012766

**GeneID (NCBI):**

57222

**UNIPROT ID:**

Q969X5

**Full Name:**

endoplasmic reticulum-golgi  
intermediate compartment (ERGIC) 1

**Calculated MW:**

290 aa, 33 kDa

**Observed MW:**

32 kDa

**Purification Method:**

Antigen affinity purification

**Recommended Dilutions:**

WB 1:500-1:3000

IP 0.5-4.0 µg for 1.0-3.0 mg of total  
protein lysate

IHC 1:50-1:500

IF 1:20-1:200

## Applications

**Tested Applications:**

IF/ICC, IHC, IP, WB, ELISA

**Cited Applications:**

WB, IF

**Species Specificity:**

human, mouse, rat

**Cited Species:**

human

**Note-IHC: suggested antigen retrieval with  
TE buffer pH 9.0; (\*) Alternatively, antigen  
retrieval may be performed with citrate  
buffer pH 6.0**

**Positive Controls:**

WB : HepG2 cells, mouse liver tissue, L02 cells

IP : HepG2 cells,

IHC : human liver cancer tissue,

IF : HepG2 cells,

## Background Information

The function of ERGIC1 remains largely unknown. ERGIC1 was highly expressed in most primary prostate tumors. It is an intriguing potential drug target especially for the ERG oncogene expressing tumors (PMID: 22761906). The MW of this protein is 32 kDa, and this antibody specially recognises the 32 kDa protein.

## Notable Publications

Author	Pubmed ID	Journal	Application
Shen Mynn Tan	25131211	Cell Rep	WB
Karsten Nalbach	36797266	Nat Commun	WB,IF
Frank Adolf	30605680	Cell Rep	WB

## Storage

**Storage:**

Store at -20°C. Stable for one year after shipment.

**Storage Buffer:**

PBS with 0.02% sodium azide and 50% glycerol pH 7.3.

Aliquoting is unnecessary for -20°C storage

For technical support and original validation data for this product please contact:

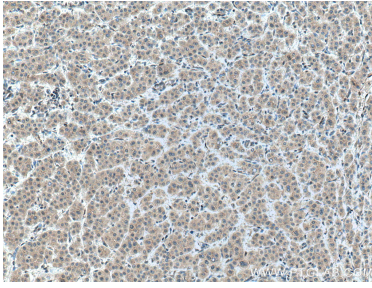
T: 4006900926

E: Proteintech-CN@ptglab.com

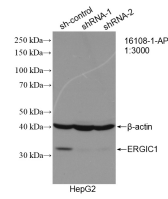
W: ptgcn.com

**This product is exclusively available under Proteintech Group brand and is not available to purchase from any other manufacturer.**

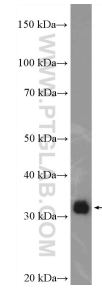
## Selected Validation Data



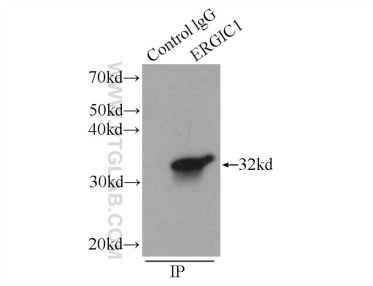
Immunohistochemical analysis of paraffin-embedded human liver cancer tissue slide using 16108-1-AP (ERGIC1 antibody) at dilution of 1:200 (under 10x lens. Heat mediated antigen retrieval with Tris-EDTA buffer (pH 9.0).



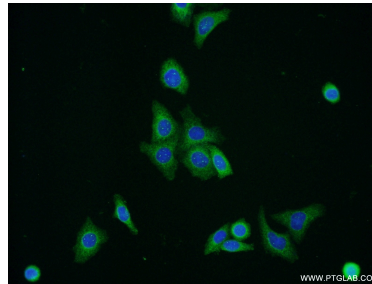
WB result of ERGIC1 antibody (16108-1-AP; 1:3000; incubated at room temperature for 1.5 hours) with sh-Control and sh-ERGIC1 transfected HepG2 cells.



HepG2 cells were subjected to SDS PAGE followed by western blot with 16108-1-AP (ERGIC1 Antibody) at dilution of 1:1500 incubated at room temperature for 1.5 hours.



IP result of anti-ERGIC1 (IP:16108-1-AP, 3ug; Detection:16108-1-AP 1:500) with HepG2 cells lysate 1720ug.



Immunofluorescent analysis of HepG2 cells using 16108-1-AP (ERGIC1 antibody) at dilution of 1:50 and Alexa Fluor 488-conjugated AffiniPure Goat Anti-Rabbit IgG(H+L).