

PELI2 Polyclonal antibody

Catalog Number: 16097-1-AP

Basic Information

Catalog Number: 16097-1-AP	GenBank Accession Number: BC009476	Purification Method: Antigen affinity purification
Size: 550 ug/ml	GeneID (NCBI): 57161	Recommended Dilutions: WB 1:500-1:3000
Source: Rabbit	UNIPROT ID: Q9HAT8	IHC 1:50-1:500
Isotype: IgG	Full Name: pellino homolog 2 (Drosophila)	IF/ICC 1:50-1:500
Immunogen Catalog Number: AG8940	Calculated MW: 420 aa, 46 kDa	
	Observed MW: 45-50 kDa	

Applications

Tested Applications: WB, IHC, IF/ICC, ELISA	Positive Controls:
Species Specificity: human, mouse, rat	WB : mouse lung tissue,
Note-IHC: suggested antigen retrieval with TE buffer pH 9.0 ; (*) Alternatively, antigen retrieval may be performed with citrate buffer pH 6.0	IHC : mouse ovary tissue,
	IF/ICC : HepG2 cells,

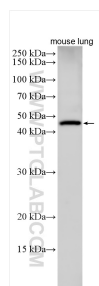
Background Information

Pellino2 (PELI2) is a newly discovered E3 ubiquitin ligase, which regulates the protein degradation, protein-protein interaction, protein translocation and signaling transduction via the ubiquitination of target proteins, and plays important roles in inflammation and the immune system. PELI2 possesses a C-terminal RING-like domain and a phospho-threonine-binding forkhead-associated (FHA) domain that are responsible for ubiquitin ligase activity and substrate binding, respectively (PMID: 24699078).

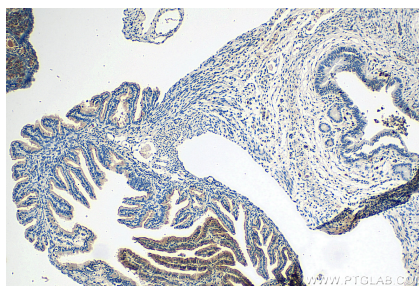
Storage

Storage:
Store at -20°C. Stable for one year after shipment.
Storage Buffer:
PBS with 0.02% sodium azide and 50% glycerol pH 7.3.
Aliquoting is unnecessary for -20°C storage

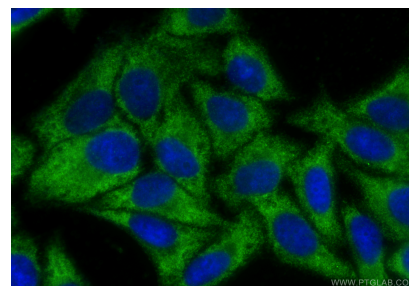
Selected Validation Data



mouse lung tissue were subjected to SDS PAGE followed by western blot with 16097-1-AP (PELI2 antibody) at dilution of 1:1500 incubated at room temperature for 1.5 hours.



Immunohistochemical analysis of paraffin-embedded mouse ovary tissue slide using 16097-1-AP (PELI2 antibody) at dilution of 1:200 (under 10x lens). Heat mediated antigen retrieval with Tris-EDTA buffer (pH 9.0).



Immunofluorescent analysis of (-20°C Ethanol) fixed HepG2 cells using PELI2 antibody (16097-1-AP) at dilution of 1:200 and CoraLite®488-Conjugated Goat Anti-Rabbit IgG(H+L) (SA00013-2).