

For Research Use Only

# GNB2 Polyclonal antibody, PBS Only

Catalog Number:16090-1-PBS



## Basic Information

Catalog Number:

16090-1-PBS

Size:

1 mg/ml

Source:

Rabbit

Isotype:

IgG

Immunogen Catalog Number:

AG9125

GenBank Accession Number:

BC010073

GeneID (NCBI):

2783

UNIPROT ID:

P62879

Full Name:

guanine nucleotide binding protein (G protein), beta polypeptide 2

Calculated MW:

340 aa, 37 kDa

Observed MW:

37 kDa

Purification Method:

Antigen affinity purification

## Applications

Tested Applications:

WB, IHC, IF/ICC, Indirect ELISA

Species Specificity:

human, mouse

## Background Information

GNB2(Guanine nucleotide-binding protein G(I)/G(S)/G(T) subunit beta-2) is also named as G protein subunit beta-2, transducin beta chain 2 and belongs to the WD repeat G protein beta family. G proteins are involved as a modulator or transducer in various transmembrane signaling systems. The beta and gamma chains are required for the GTPase activity, for replacement of GDP by GTP, and for G protein-effector interaction.

## Storage

Storage:

Store at -80°C.

**The product is shipped with ice packs. Upon receipt, store it immediately at -80°C**

Storage Buffer:

PBS Only

For technical support and original validation data for this product please contact:

T: 4006900926

E: Proteintech-CN@ptglab.com

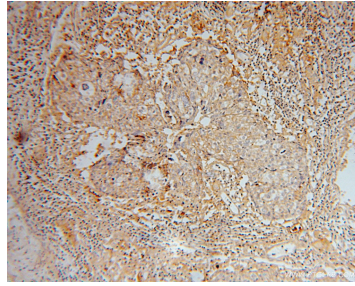
W: ptgcn.com

**This product is exclusively available under Proteintech Group brand and is not available to purchase from any other manufacturer.**

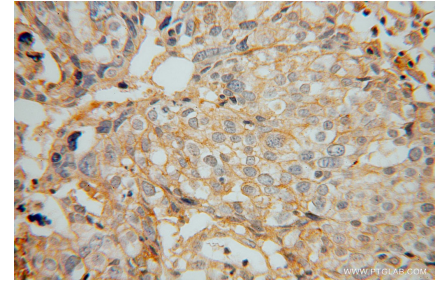
## Selected Validation Data



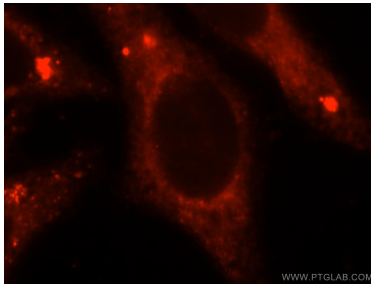
HeLa cells were subjected to SDS PAGE followed by western blot with 16090-1-AP (GNB2 antibody) at dilution of 1:500 incubated at room temperature for 1.5 hours. This data was developed using the same antibody clone with 16090-1-PBS in a different storage buffer formulation.



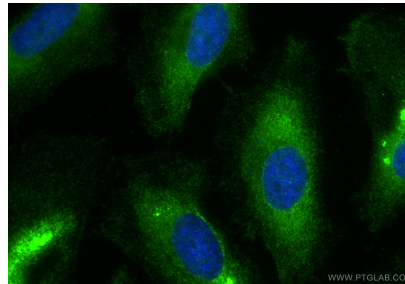
Immunohistochemical analysis of paraffin-embedded human ovary tumor using 16090-1-AP (GNB2 antibody) at dilution of 1:50 (under 10x lens). This data was developed using the same antibody clone with 16090-1-PBS in a different storage buffer formulation.



Immunohistochemical analysis of paraffin-embedded human ovary tumor using 16090-1-AP (GNB2 antibody) at dilution of 1:50 (under 40x lens). This data was developed using the same antibody clone with 16090-1-PBS in a different storage buffer formulation.



Immunofluorescent analysis of HepG2 cells, using GNB2 antibody 16090-1-AP at 1:25 dilution and Rhodamine-labeled goat anti-rabbit IgG (red). This data was developed using the same antibody clone with 16090-1-PBS in a different storage buffer formulation.



Immunofluorescent analysis of (-20°C Ethanol) fixed HeLa cells using GNB2 antibody (16090-1-AP) at dilution of 1:400 and CoraLite®488-Conjugated Goat Anti-Rabbit IgG(H+L) (SA00013-2). This data was developed using the same antibody clone with 16090-1-PBS in a different storage buffer formulation.