

For Research Use Only

# GNB2 Polyclonal antibody

Catalog Number: 16090-1-AP

2 Publications



## Basic Information

Catalog Number:

16090-1-AP

Size:

350 ug/ml

Source:

Rabbit

Isotype:

IgG

Immunogen Catalog Number:

AG9125

GenBank Accession Number:

BC010073

GeneID (NCBI):

2783

UNIPROT ID:

P62879

Full Name:

guanine nucleotide binding protein (G protein), beta polypeptide 2

Calculated MW:

340 aa, 37 kDa

Observed MW:

37 kDa

Purification Method:

Antigen affinity purification

Recommended Dilutions:

WB 1:500-1:2000

IHC 1:20-1:200

IF/ICC 1:200-1:800

## Applications

Tested Applications:

WB, IHC, IF/ICC, ELISA

Cited Applications:

WB

Species Specificity:

human, mouse

Cited Species:

human, mouse

**Note-IHC: suggested antigen retrieval with TE buffer pH 9.0; (\*) Alternatively, antigen retrieval may be performed with citrate buffer pH 6.0**

Positive Controls:

WB : HeLa cells, HEK-293 cells, Jurkat cells

IHC : human ovary tumor tissue,

IF/ICC : HeLa cells, HepG2 cells

## Background Information

GNB2(Guanine nucleotide-binding protein G(I)/G(S)/G(T) subunit beta-2) is also named as G protein subunit beta-2, transducin beta chain 2 and belongs to the WD repeat G protein beta family. G proteins are involved as a modulator or transducer in various transmembrane signaling systems. The beta and gamma chains are required for the GTPase activity, for replacement of GDP by GTP, and for G protein-effector interaction.

## Notable Publications

Author	Pubmed ID	Journal	Application
Yue Zheng	35845072	Front Cardiovasc Med	
Zhong Ding	39008526	PLoS Biol	WB

## Storage

Storage:

Store at -20°C. Stable for one year after shipment.

Storage Buffer:

PBS with 0.02% sodium azide and 50% glycerol pH 7.3.

Aliquoting is unnecessary for -20°C storage

For technical support and original validation data for this product please contact:

T: 4006900926

E: Proteintech-CN@ptglab.com

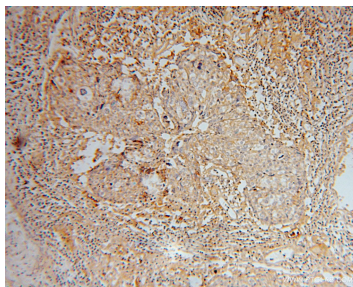
W: ptgcn.com

This product is exclusively available under Proteintech Group brand and is not available to purchase from any other manufacturer.

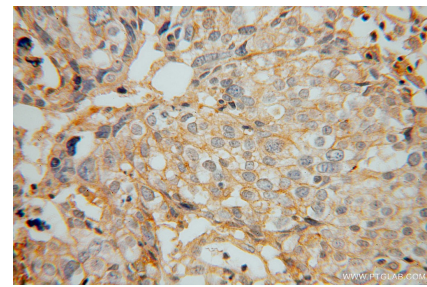
## Selected Validation Data



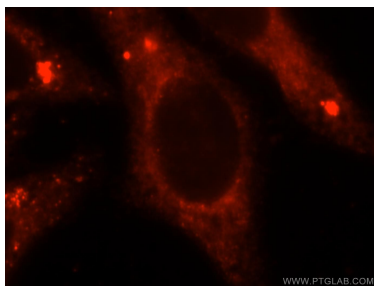
HeLa cells were subjected to SDS PAGE followed by western blot with 16090-1-AP (GNB2 antibody) at dilution of 1:500 incubated at room temperature for 1.5 hours.



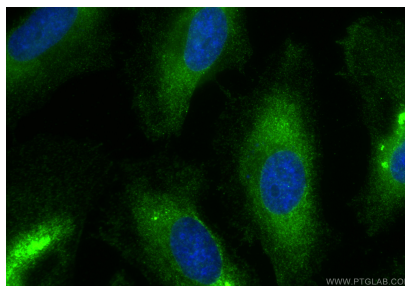
Immunohistochemical analysis of paraffin-embedded human ovary tumor using 16090-1-AP (GNB2 antibody) at dilution of 1:50 (under 10x lens).



Immunohistochemical analysis of paraffin-embedded human ovary tumor using 16090-1-AP (GNB2 antibody) at dilution of 1:50 (under 40x lens).



Immunofluorescent analysis of HepG2 cells, using GNB2 antibody 16090-1-AP at 1:25 dilution and Rhodamine-labeled goat anti-rabbit IgG (red).



Immunofluorescent analysis of (-20°C Ethanol) fixed HeLa cells using GNB2 antibody (16090-1-AP) at dilution of 1:400 and Coralite®488-Conjugated Goat Anti-Rabbit IgG(H+L) (SA00013-2).