

For Research Use Only

SEC24C Polyclonal antibody, PBS Only

Catalog Number:16073-1-PBS



Basic Information

Catalog Number:

16073-1-PBS

Source:

Rabbit

Isotype:

IgG

Immunogen Catalog Number:

AG9030

GenBank Accession Number:

BC018928

GeneID (NCBI):

9632

UNIPROT ID:

P53992

Full Name:

SEC24 family, member C (S. cerevisiae)

Calculated MW:

1094 aa, 118 kDa

Observed MW:

110-120 kDa

Purification Method:

Antigen affinity purification

Applications

Tested Applications:

WB, IF/ICC, ELISA

Species Specificity:

human, mouse, rat

Background Information

COPII-coated vesicles mediate anterograde transport from the ER to the Golgi apparatus. COPII is composed of three parts: two coat protein complexes (Sec23/24 complex and Sec13/31 complex) and one small GTP-binding protein, Sar1 (PMID: 9568718). Sec24 subunit of the coat complex has been implicated in cargo recognition (PMID: 17316621). In mammal cells, there are four Sec24 isoforms, termed Sec24A, Sec24B, Sec24C, and Sec24D (PMID: 10329445).

Storage

Storage:

Store at -80°C.

The product is shipped with ice packs. Upon receipt, store it immediately at -80°C

Storage Buffer:

PBS only, pH7.3

For technical support and original validation data for this product please contact:

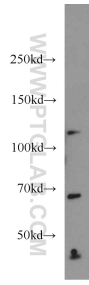
T: 4006900926

E: Proteintech-CN@ptglab.com

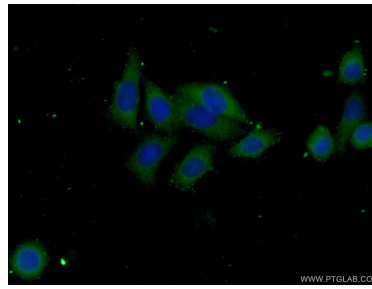
W: ptgcn.com

This product is exclusively available under Proteintech Group brand and is not available to purchase from any other manufacturer.

Selected Validation Data



HeLa cells were subjected to SDS PAGE followed by western blot with 16073-1-AP (SEC24C antibody) at dilution of 1:500 incubated at room temperature for 1.5 hours. This data was developed using the same antibody clone with 16073-1-PBS in a different storage buffer formulation.



Immunofluorescent analysis of (-20°C Ethanol) fixed HeLa cells using 16073-1-AP (SEC24C antibody) at dilution of 1:25 and Alexa Fluor 488-conjugated AffiniPure Goat Anti-Rabbit IgG(H+L). This data was developed using the same antibody clone with 16073-1-PBS in a different storage buffer formulation.