

For Research Use Only

CYP39A1 Polyclonal antibody

Catalog Number: 16062-1-AP



Basic Information

Catalog Number:

16062-1-AP

Size:

800 µg/ml

Source:

Rabbit

Isotype:

IgG

Immunogen Catalog Number:

AG8896

GenBank Accession Number:

BC010358

GeneID (NCBI):

51302

UNIPROT ID:

Q9NYL5

Full Name:

cytochrome P450, family 39, subfamily A, polypeptide 1

Calculated MW:

469 aa, 54 kDa

Observed MW:

54 kDa

Purification Method:

Antigen affinity purification

Recommended Dilutions:

WB 1:200-1:1000

IHC 1:50-1:500

Applications

Tested Applications:

IHC, WB, ELISA

Species Specificity:

human

Note-IHC: suggested antigen retrieval with TE buffer pH 9.0; (*) Alternatively, antigen retrieval may be performed with citrate buffer pH 6.0

Positive Controls:

WB : L02 cells, SMMC-7721 cells

IHC : human liver tissue, human liver cancer tissue

Background Information

Storage

Storage:

Store at -20°C. Stable for one year after shipment.

Storage Buffer:

PBS with 0.02% sodium azide and 50% glycerol pH 7.3.

Aliquoting is unnecessary for -20°C storage

For technical support and original validation data for this product please contact:

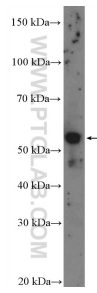
T: 4006900926

E: Proteintech-CN@ptglab.com

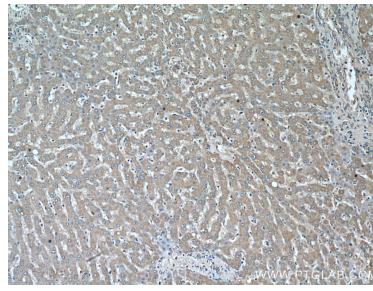
W: ptgcn.com

This product is exclusively available under Proteintech Group brand and is not available to purchase from any other manufacturer.

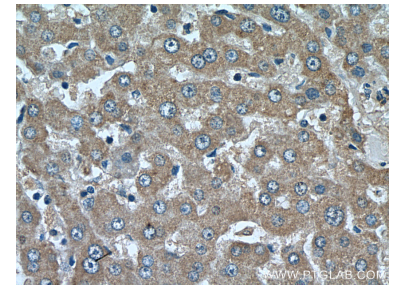
Selected Validation Data



L02 cells were subjected to SDS PAGE followed by western blot with 16062-1-AP (CYP39A1 Antibody) at dilution of 1:300 incubated at room temperature for 1.5 hours.



Immunohistochemical analysis of paraffin-embedded human liver tissue slide using 16062-1-AP (CYP39A1 Antibody) at dilution of 1:200 (under 10x lens).



Immunohistochemical analysis of paraffin-embedded human liver tissue slide using 16062-1-AP (CYP39A1 Antibody) at dilution of 1:200 (under 40x lens).