

For Research Use Only

# GINS1 Polyclonal antibody, PBS Only

Catalog Number: 16061-1-PBS



## Basic Information

Catalog Number:

16061-1-PBS

Concentration:

1 mg/ml

Source:

Rabbit

Isotype:

IgG

Immunogen Catalog Number:

AG8895

GenBank Accession Number:

BC012542

GeneID (NCBI):

9837

UNIPROT ID:

Q14691

Full Name:

GINS complex subunit 1 (Psf1 homolog)

Calculated MW:

196 aa, 23 kDa

Observed MW:

20 kDa

Purification Method:

Antigen affinity purification

## Applications

Tested Applications:

WB, IHC, Indirect ELISA

Species Specificity:

human, mouse, rat

## Background Information

GINS1, also known as Partner of SLD Five 1 (PSF1) is a member of the GINS (Go-Ichi-Nii-San) complex, which plays a vital role in the initiation and elongation of DNA replication (PMID: 34414190). GINS1 was initially found to be predominantly expressed in highly proliferating cells instead of mature cells. Later on, it was found that GINS was involved in the tumorigenesis of various cancers, including breast cancer, colorectal cancer, and hepatocellular carcinoma (PMID: 36065190).

## Storage

Storage:

Store at -80°C.

The product is shipped with ice packs. Upon receipt, store it immediately at -80°C

Storage Buffer:

PBS Only

For technical support and original validation data for this product please contact:

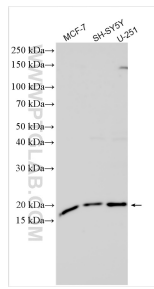
T: 4006900926

E: [Proteintech-CN@ptglab.com](mailto:Proteintech-CN@ptglab.com)

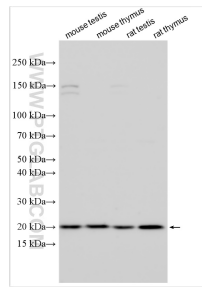
W: [ptgcn.com](http://ptgcn.com)

This product is exclusively available under Proteintech Group brand and is not available to purchase from any other manufacturer.

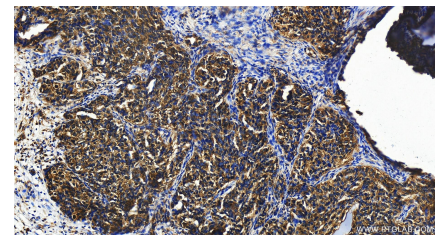
## Selected Validation Data



Various lysates were subjected to SDS PAGE followed by western blot with 16061-1-AP (GINS1 antibody) at dilution of 1:4000 incubated at room temperature for 1.5 hours. This data was developed using the same antibody clone with 16061-1-PBS in a different storage buffer formulation.



Various lysates were subjected to SDS PAGE followed by western blot with 16061-1-AP (GINS1 antibody) at dilution of 1:1000 incubated at room temperature for 1.5 hours. This data was developed using the same antibody clone with 16061-1-PBS in a different storage buffer formulation.



Immunohistochemical analysis of paraffin-embedded human ovary cancer tissue slide using 16061-1-AP (GINS1 antibody) at dilution of 1:200 (under 20x lens). Heat mediated antigen retrieval with Tris-EDTA buffer (pH 9.0). This data was developed using the same antibody clone with 16061-1-PBS in a different storage buffer formulation.