

For Research Use Only

ATP6V1C1 Polyclonal antibody

Catalog Number: 16054-1-AP

8 Publications



Basic Information

Catalog Number:

16054-1-AP

Size:

350 µg/ml

Source:

Rabbit

Isotype:

IgG

Immunogen Catalog Number:

AG9020

GenBank Accession Number:

BC010960

GeneID (NCBI):

528

UNIPROT ID:

P21283

Full Name:

ATPase, H⁺ transporting, lysosomal
42kDa, V1 subunit C1

Calculated MW:

382 aa, 44 kDa

Observed MW:

42-44 kDa

Purification Method:

Antigen affinity purification

Recommended Dilutions:

WB 1:1000-1:4000

IHC 1:20-1:200

Applications

Tested Applications:

WB, IHC, ELISA

Cited Applications:

WB, IHC

Species Specificity:

human, mouse, rat

Cited Species:

human, mouse

**Note-IHC: suggested antigen retrieval with
TE buffer pH 9.0; (*) Alternatively, antigen
retrieval may be performed with citrate
buffer pH 6.0**

Positive Controls:

WB : HeLa cells, NIH/3T3 cells, human brain tissue,
human testis tissue, mouse brain tissue, rat brain
tissue

IHC : human stomach cancer tissue,

Background Information

Notable Publications

| Author | Pubmed ID | Journal | Application |
|------------------|-----------|----------------------------|-------------|
| Jong-Jer Lee | 31672277 | Biochem Biophys Res Commun | WB |
| Masashi Watanabe | 33082525 | Commun Biol | WB |
| Kie Itoh | 29853636 | J Biol Chem | WB |

Storage

Storage:

Store at -20°C. Stable for one year after shipment.

Storage Buffer:

PBS with 0.02% sodium azide and 50% glycerol pH 7.3.

Aliquoting is unnecessary for -20°C storage

For technical support and original validation data for this product please contact:

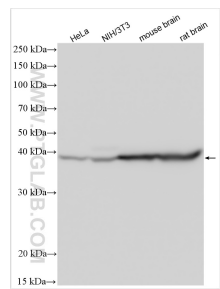
T: 4006900926

E: Proteintech-CN@ptglab.com

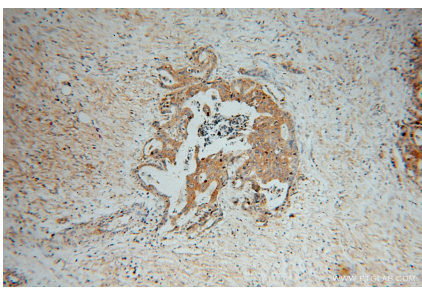
W: ptgcn.com

This product is exclusively available under Proteintech Group brand and is not available to purchase from any other manufacturer.

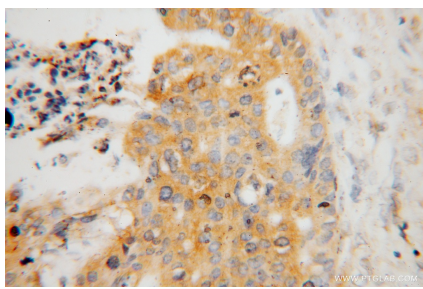
Selected Validation Data



Various lysates were subjected to SDS PAGE followed by western blot with 16054-1-AP (ATP6V1C1 antibody) at dilution of 1:2000 incubated at room temperature for 1.5 hours.



Immunohistochemical analysis of paraffin-embedded human stomach cancer using 16054-1-AP (ATP6V1C1 antibody) at dilution of 1:50 (under 10x lens).



Immunohistochemical analysis of paraffin-embedded human stomach cancer using 16054-1-AP (ATP6V1C1 antibody) at dilution of 1:50 (under 40x lens).