

# MYLPF Polyclonal antibody

Catalog Number: 16052-1-AP

2 Publications

## Basic Information

Catalog Number:

16052-1-AP

Size:

400 µg/ml

Source:

Rabbit

Isotype:

IgG

Immunogen Catalog Number:

AG9013

GenBank Accession Number:

BC012571

GeneID (NCBI):

29895

UNIPROT ID:

Q96A32

Full Name:

myosin light chain, phosphorylatable,  
fast skeletal muscle

Calculated MW:

169 aa, 19 kDa

Observed MW:

19 kDa

Purification Method:

Antigen affinity purification

Recommended Dilutions:

WB 1:500-1:2000

IHC 1:20-1:200

## Applications

Tested Applications:

IHC, WB, ELISA

Cited Applications:

WB

Species Specificity:

human, mouse, rat

Cited Species:

mouse

**Note-IHC: suggested antigen retrieval with  
TE buffer pH 9.0; (\*) Alternatively, antigen  
retrieval may be performed with citrate  
buffer pH 6.0**

Positive Controls:

WB : mouse skeletal muscle tissue,

IHC : human skeletal muscle tissue,

## Background Information

### Notable Publications

Author	Pubmed ID	Journal	Application
Magdalena A Cichewicz	30037979	Mol Cell Biol	WB
Ryohei Oya	35163674	Int J Mol Sci	WB

## Storage

Storage:

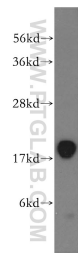
Store at -20°C. Stable for one year after shipment.

Storage Buffer:

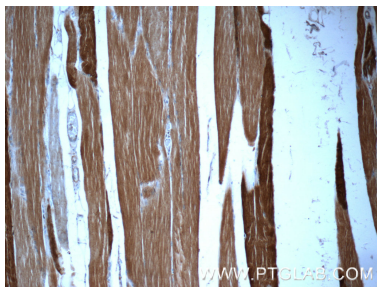
PBS with 0.02% sodium azide and 50% glycerol pH 7.3.

Aliquoting is unnecessary for -20°C storage

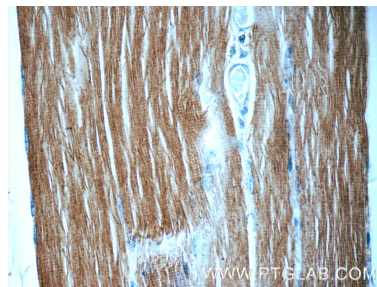
## Selected Validation Data



mouse skeletal muscle tissue were subjected to SDS PAGE followed by western blot with 16052-1-AP (MYLPF antibody) at dilution of 1:400 incubated at room temperature for 1.5 hours.



Immunohistochemical analysis of paraffin-embedded human skeletal muscle tissue slide using 16052-1-AP (MYLPF Antibody) at dilution of 1:50 (under 10x lens).



Immunohistochemical analysis of paraffin-embedded human skeletal muscle tissue slide using 16052-1-AP (MYLPF Antibody) at dilution of 1:50 (under 40x lens).