

For Research Use Only

MYEF2 Polyclonal antibody

Catalog Number: 16051-1-AP

Featured Product

2 Publications



Basic Information

Catalog Number:

16051-1-AP

Size:

1200 ug/ml

Source:

Rabbit

Isotype:

IgG

Immunogen Catalog Number:

AG9010

GenBank Accession Number:

BC014533

GeneID (NCBI):

50804

UNIPROT ID:

Q9P2K5

Full Name:

myelin expression factor 2

Calculated MW:

600 aa, 64 kDa

Observed MW:

61-64 kDa

Purification Method:

Antigen affinity purification

Recommended Dilutions:

WB 1:5000-1:50000

IP 0.5-4.0 ug for 1.0-3.0 mg of total protein lysate

IHC 1:50-1:500

IF/ICC 1:250-1:1000

Applications

Tested Applications:

WB, IHC, IF/ICC, IP, ELISA

Cited Applications:

WB, IHC, CoIP

Species Specificity:

human, mouse, rat

Cited Species:

human, mouse

Note-IHC: suggested antigen retrieval with TE buffer pH 9.0; (*) Alternatively, antigen retrieval may be performed with citrate buffer pH 6.0

Positive Controls:

WB : HeLa cells, Jurkat cells, HepG2 cells, MCF-7 cells

IP : Jurkat cells,

IHC : human breast cancer tissue,

IF/ICC : HepG2 cells,

Background Information

Notable Publications

Author	Pubmed ID	Journal	Application
Yan Wang	34610310	Cell Rep	WB, IHC, CoIP
Peng Zhang	36658471	BMC Gastroenterol	WB, IHC

Storage

Storage:

Store at -20°C. Stable for one year after shipment.

Storage Buffer:

PBS with 0.02% sodium azide and 50% glycerol pH 7.3.

Aliquoting is unnecessary for -20°C storage

For technical support and original validation data for this product please contact:

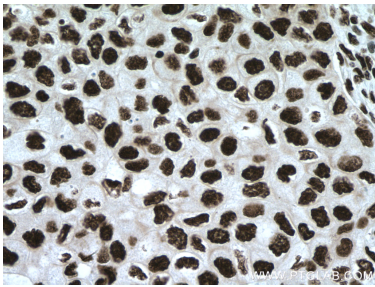
T: 4006900926

E: Proteintech-CN@ptglab.com

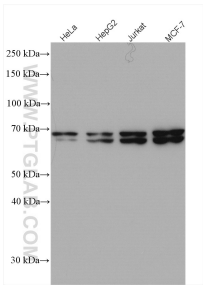
W: ptgcn.com

This product is exclusively available under Proteintech Group brand and is not available to purchase from any other manufacturer.

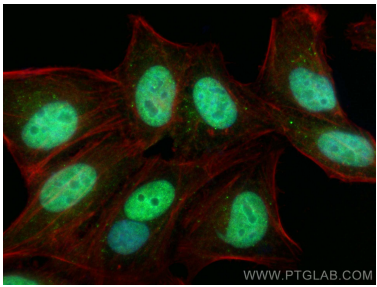
Selected Validation Data



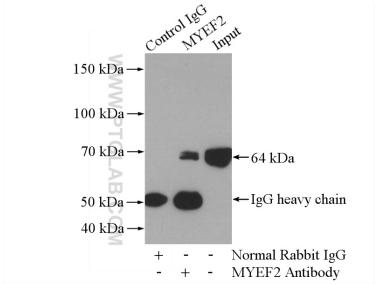
Immunohistochemical analysis of paraffin-embedded human breast cancer tissue slide using 16051-1-AP (MYEF2 antibody) at dilution of 1:200 (under 40x lens. Heat mediated antigen retrieval with Tris-EDTA buffer (pH 9.0).



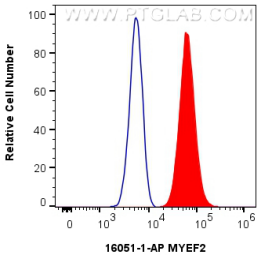
Various lysates were subjected to SDS PAGE followed by western blot with 16051-1-AP (MYEF2 antibody) at dilution of 1:10000 incubated at room temperature for 1.5 hours.



Immunofluorescent analysis of (4% PFA) fixed HepG2 cells using MYEF2 antibody (16051-1-AP) at dilution of 1:500 and Multi-rAb Coralite® Plus 488-Goat Anti-Rabbit Recombinant Secondary Antibody (H+L) (RGAR002), CL594-phalloidin (red).



IP result of anti-MYEF2 (IP:16051-1-AP, 4ug; Detection:16051-1-AP 1:2000) with Jurkat cells lysate 2800ug.



1x10⁶ C6 cells were intracellularly stained with 0.25 ug MYEF2 Polyclonal antibody (16051-1-AP) and Coralite®488-Conjugated Goat Anti-Rabbit IgG(H+L) (SA00013-2)(red), or 0.25 ug Rabbit IgG control Rabbit PolyAb (30000-0-AP) (blue). Cells were fixed and permeabilized with Transcription Factor Staining Buffer Kit (PF00011).