

For Research Use Only

# SOCS2 Polyclonal antibody, PBS Only

Catalog Number:16038-1-PBS



## Basic Information

<b>Catalog Number:</b> 16038-1-PBS	<b>GenBank Accession Number:</b> BC010399	<b>Purification Method:</b> Antigen affinity purification
<b>Source:</b> Rabbit	<b>GeneID (NCBI):</b> 8835	
<b>Isotype:</b> IgG	<b>UNIPROT ID:</b> O14508	
<b>Immunogen Catalog Number:</b> AG8909	<b>Full Name:</b> suppressor of cytokine signaling 2	
	<b>Calculated MW:</b> 198 aa, 22 kDa	
	<b>Observed MW:</b> 22 kDa	

## Applications

**Tested Applications:**  
WB, Indirect ELISA

**Species Specificity:**  
human

## Background Information

SOCS2 is the substrate-recognition component of a cullin-5-RING E3 ubiquitin-protein ligase complex (ECS complex, also named CRL5 complex), which mediates the ubiquitination and subsequent proteasomal degradation of target proteins, such as EPOR and GHR (PMID: 11781573; 21980433; 25505247; 31182716; 34857742).

## Storage

**Storage:**  
Store at -80°C.  
**The product is shipped with ice packs. Upon receipt, store it immediately at -80°C**

**Storage Buffer:**  
PBS only, pH7.3

For technical support and original validation data for this product please contact:

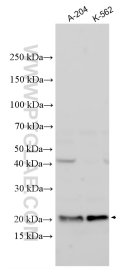
T: 4006900926

E: [Proteintech-CN@ptglab.com](mailto:Proteintech-CN@ptglab.com)

W: [ptgcn.com](http://ptgcn.com)

**This product is exclusively available under Proteintech Group brand and is not available to purchase from any other manufacturer.**

## Selected Validation Data



Various lysates were subjected to SDS PAGE followed by western blot with 16038-1-AP (SOCS2 antibody) at dilution of 1:1500 incubated at room temperature for 1.5 hours. This data was developed using the same antibody clone with 16038-1-PBS in a different storage buffer formulation.