

For Research Use Only

# SERPINB2 Polyclonal antibody

Catalog Number: 16035-1-AP **4 Publications**



## Basic Information

**Catalog Number:**

16035-1-AP

**Size:**

400 µg/ml

**Source:**

Rabbit

**Isotype:**

IgG

**Immunogen Catalog Number:**

AG8906

**GenBank Accession Number:**

BC012609

**GeneID (NCBI):**

5055

**UNIPROT ID:**

P05120

**Full Name:**

serpin peptidase inhibitor, clade B (ovalbumin), member 2

**Calculated MW:**

415 aa, 47 kDa

**Observed MW:**

45-47 kDa

**Purification Method:**

Antigen affinity purification

**Recommended Dilutions:**

WB 1:500-1:1000

IP 0.5-4.0 µg for 1.0-3.0 mg of total protein lysate

## Applications

**Tested Applications:**

IP, WB, ELISA

**Cited Applications:**

WB, IHC

**Species Specificity:**

human

**Cited Species:**

human

**Positive Controls:**

WB: A431 cells, Jurkat cells

IP: Jurkat cells,

## Background Information

### Notable Publications

Author	Pubmed ID	Journal	Application
Chunling Liu	26338969	Oncotarget	WB, IHC
Chia-Yi Su	26230665	PLoS One	IHC
Dan Zhang	30031066	J Proteomics	WB

## Storage

**Storage:**

Store at -20°C. Stable for one year after shipment.

**Storage Buffer:**

PBS with 0.02% sodium azide and 50% glycerol pH 7.3.

Aliquoting is unnecessary for -20°C storage

For technical support and original validation data for this product please contact:

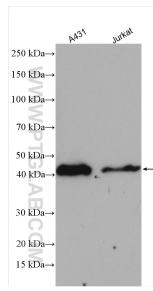
T: 4006900926

E: Proteintech-CN@ptglab.com

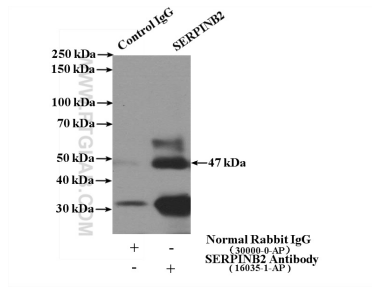
W: ptgcn.com

**This product is exclusively available under Proteintech Group brand and is not available to purchase from any other manufacturer.**

## Selected Validation Data



Various lysates were subjected to SDS PAGE followed by western blot with 16035-1-AP (SERPINB2 antibody) at dilution of 1:800 incubated at room temperature for 1.5 hours.



IP result of anti-SERPINB2 (IP:16035-1-AP, 4ug; Detection:16035-1-AP 1:300) with Jurkat cells lysate 3600ug.