

For Research Use Only

# S100A1 Polyclonal antibody, PBS Only

Catalog Number: 16027-1-PBS

Featured Product



## Basic Information

Catalog Number:

16027-1-PBS

Source:

Rabbit

Isotype:

IgG

Immunogen Catalog Number:

AG8871

GenBank Accession Number:

BC014392

GeneID (NCBI):

6271

UNIPROT ID:

P23297

Full Name:

S100 calcium binding protein A1

Calculated MW:

94 aa, 11 kDa

Observed MW:

10 kDa

Purification Method:

Antigen affinity purification

## Applications

Tested Applications:

WB, IHC, IF-P, Indirect ELISA

Species Specificity:

human, mouse, rat

## Background Information

S100A1 belongs to the S100 protein family, which represents the largest group among EF-hand Ca<sup>2+</sup>-binding proteins exclusively expressed in vertebrates. S100 proteins have been described as central regulators of numerous cellular and molecular processes, often operating in a cell-type-specific manner (PMID: 11991838). S100A1 is a central regulator of Ca<sup>2+</sup>-driven networks that orchestrates compartmentalized Ca<sup>2+</sup> fluxes in the heart (PMID: 22336719, PMID: 26021637). S100A1 is primarily expressed in cardiomyocytes (CM). Endothelial cells (EC) express significantly lower S100A1 levels, whereas fibroblasts do not express S100A1 (PMID: 38641766).

## Storage

Storage:

Store at -80°C.

**The product is shipped with ice packs. Upon receipt, store it immediately at -80°C**

Storage Buffer:

PBS only, pH7.3

For technical support and original validation data for this product please contact:

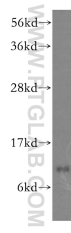
T: 4006900926

E: [Proteintech-CN@ptglab.com](mailto:Proteintech-CN@ptglab.com)

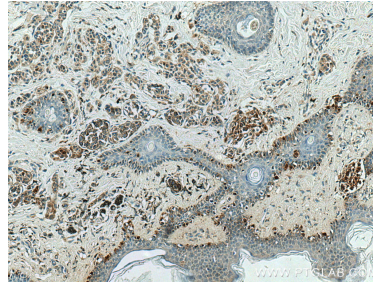
W: [ptgcn.com](http://ptgcn.com)

**This product is exclusively available under Proteintech Group brand and is not available to purchase from any other manufacturer.**

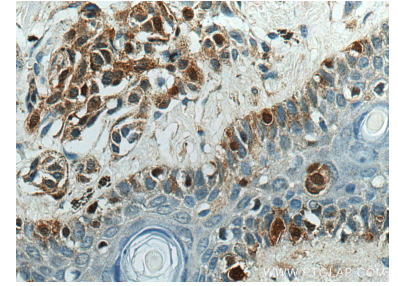
## Selected Validation Data



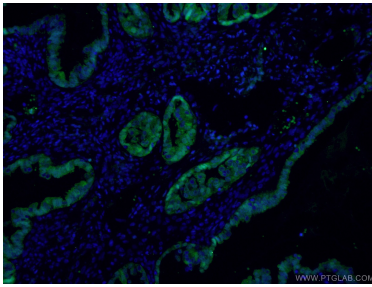
human heart tissue were subjected to SDS PAGE followed by western blot with 16027-1-AP (S100A1 antibody) at dilution of 1:500 incubated at room temperature for 1.5 hours. This data was developed using the same antibody clone with 16027-1-PBS in a different storage buffer formulation.



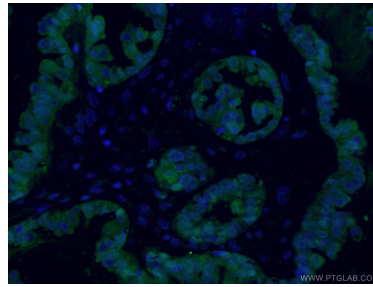
Immunohistochemical analysis of paraffin-embedded human malignant melanoma tissue slide using 16027-1-AP (S100A1 antibody) at dilution of 1:200 (under 10x lens).. This data was developed using the same antibody clone with 16027-1-PBS in a different storage buffer formulation.



Immunohistochemical analysis of paraffin-embedded human malignant melanoma tissue slide using 16027-1-AP (S100A1 antibody) at dilution of 1:200 (under 40x lens).. This data was developed using the same antibody clone with 16027-1-PBS in a different storage buffer formulation.



Immunofluorescent analysis of (4% PFA) fixed human ovary cancer cells using 16027-1-AP (S100A1 antibody) at dilution of 1:50 and Alexa Fluor 488-Conjugated AffiniPure Goat Anti-Rabbit IgG(H+L). This data was developed using the same antibody clone with 16027-1-PBS in a different storage buffer formulation.



Immunofluorescent analysis of (4% PFA) fixed human ovary cancer cells using 16027-1-AP (S100A1 antibody) at dilution of 1:50 and Alexa Fluor 488-Conjugated AffiniPure Goat Anti-Rabbit IgG(H+L). This data was developed using the same antibody clone with 16027-1-PBS in a different storage buffer formulation.