

For Research Use Only

BCL2L2 Polyclonal antibody

Catalog Number: 16026-1-AP

12 Publications



Basic Information

Catalog Number:

16026-1-AP

Source:

Rabbit

Isotype:

IgG

Immunogen Catalog Number:

AG8863

GenBank Accession Number:

BC021198

GeneID (NCBI):

599

UNIPROT ID:

Q92843

Full Name:

BCL2-like 2

Calculated MW:

193 aa, 21 kDa

Observed MW:

21 kDa

Purification Method:

Antigen affinity purification

Recommended Dilutions:

WB: 1:500-1:1000

IHC: 1:50-1:500

Applications

Tested Applications:

WB, IHC, ELISA

Cited Applications:

WB, IF

Species Specificity:

human, mouse, rat

Cited Species:

human, mouse, rat

Note-IHC: suggested antigen retrieval with TE buffer pH 9.0; (*) Alternatively, antigen retrieval may be performed with citrate buffer pH 6.0

Positive Controls:

WB : HL-60 cells,

IHC : human liver cancer tissue,

Background Information

Notable Publications

Author	Pubmed ID	Journal	Application
Menghui Yin	34805798	iScience	WB
Yu Guohua G	23133614	PLoS One	WB
Yong Yu	36255003	Neural Regen Res	WB

Storage

Storage:

Store at -20°C. Stable for one year after shipment.

Storage Buffer:

PBS with 0.02% sodium azide and 50% glycerol, pH7.3

Aliquoting is unnecessary for -20°C storage

For technical support and original validation data for this product please contact:

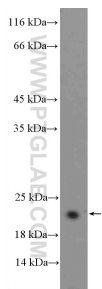
T: 4006900926

E: Proteintech-CN@ptglab.com

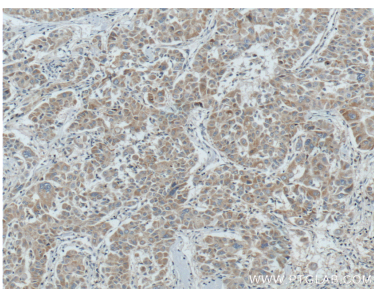
W: ptgcn.com

This product is exclusively available under Proteintech Group brand and is not available to purchase from any other manufacturer.

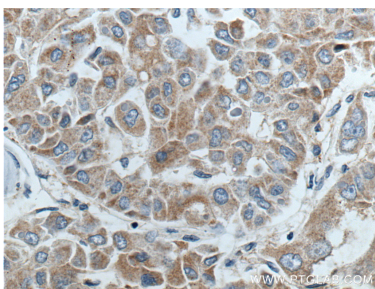
Selected Validation Data



HL-60 cells were subjected to SDS PAGE followed by western blot with 16026-1-AP (BCL2L2 Antibody) at dilution of 1:600 incubated at room temperature for 1.5 hours.



Immunohistochemical analysis of paraffin-embedded human liver cancer tissue slide using 16026-1-AP (BCL2L2 Antibody) at dilution of 1:200 (under 10x lens). Heat mediated antigen retrieval with Tris-EDTA buffer (pH 9.0).



Immunohistochemical analysis of paraffin-embedded human liver cancer tissue slide using 16026-1-AP (BCL2L2 Antibody) at dilution of 1:200 (under 40x lens). Heat mediated antigen retrieval with Tris-EDTA buffer (pH 9.0).