

For Research Use Only

ARL1 Polyclonal antibody

Catalog Number: 16012-1-AP

Featured Product

12 Publications



Basic Information

Catalog Number:

16012-1-AP

Concentration:

800 ug/ml

Source:

Rabbit

Isotype:

IgG

Immunogen Catalog Number:

AG8770

GenBank Accession Number:

BC007000

GeneID (NCBI):

400

UNIPROT ID:

P40616

Full Name:

ADP-ribosylation factor-like 1

Calculated MW:

181 aa, 20 kDa

Observed MW:

20 kDa

Purification Method:

Antigen affinity purification

Recommended Dilutions:

WB 1:1000-1:8000

IP 0.5-4.0 ug for 1.0-3.0 mg of total protein lysate

IHC 1:50-1:500

IF/ICC 1:250-1:1000

Applications

Tested Applications:

WB, IHC, IF/ICC, IP, ELISA

Cited Applications:

WB, IF, IP

Species Specificity:

human, mouse, rat

Cited Species:

human, mouse

Note-IHC: suggested antigen retrieval with TE buffer pH 9.0; (*) Alternatively, antigen retrieval may be performed with citrate buffer pH 6.0

Positive Controls:

WB : MCF-7 cells, K-562 cells, HeLa cells, mouse liver tissue, HepG2 cells, Neuro-2a cells, C6 cells

IP : Neuro-2a cells,

IHC : human stomach cancer tissue,

IF/ICC : HeLa cells,

Background Information

Notable Publications

Author	Pubmed ID	Journal	Application
Wouter W Kallemeijn	34707257	Nat Protoc	WB,IP
Sebastian Doll	31634899	Nature	WB
Andrea Goya Grocin	30341083	Mol Cell Proteomics	WB

Storage

Storage:

Store at -20°C. Stable for one year after shipment.

Storage Buffer:

PBS with 0.02% sodium azide and 50% glycerol, pH7.3

Aliquoting is unnecessary for -20°C storage

For technical support and original validation data for this product please contact:

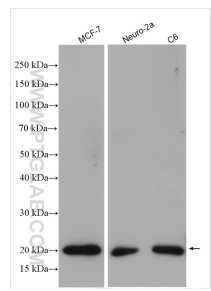
T: 4006900926

E: Proteintech-CN@ptglab.com

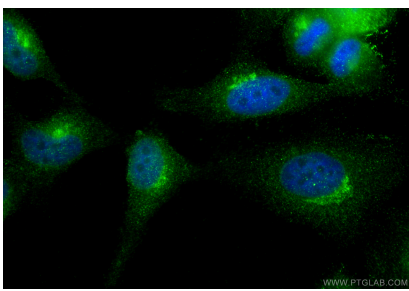
W: ptgcn.com

This product is exclusively available under Proteintech Group brand and is not available to purchase from any other manufacturer.

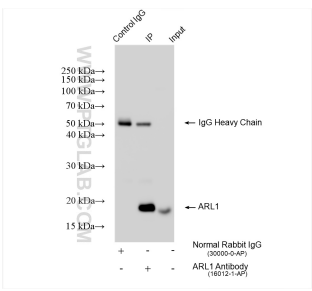
Selected Validation Data



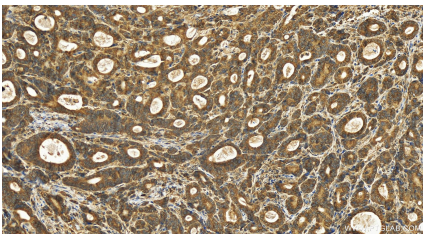
Various lysates were subjected to SDS PAGE followed by western blot with 16012-1-AP (ARL1 antibody) at dilution of 1:4000 incubated at room temperature for 1.5 hours.



Immunofluorescent analysis of (4% PFA) fixed HeLa cells using ARL1 antibody (16012-1-AP) at dilution of 1:500 and CoraLite®488-Conjugated Goat Anti-Rabbit IgG(H+L) (SA00013-2).



IP result of anti-ARL1 (IP:16012-1-AP, 4ug; Detection:16012-1-AP 1:4000) with Neuro-2a cells lysate 2400 ug.



Immunohistochemical analysis of paraffin-embedded human stomach cancer tissue slide using 16012-1-AP (ARL1 antibody) at dilution of 1:200 (under 20x lens). Heat mediated antigen retrieval with Tris-EDTA buffer (pH 9.0).