

For Research Use Only

CYFIP1/2 Polyclonal antibody

Catalog Number: 16011-1-AP

3 Publications



Basic Information

Catalog Number:

16011-1-AP

Source:

Rabbit

Isotype:

IgG

Immunogen Catalog Number:

AG8749

GenBank Accession Number:

BC011762

GeneID (NCBI):

26999

UNIPROT ID:

Q96F07

Full Name:

cytoplasmic FMR1 interacting protein 2

Calculated MW:

148 kDa

Observed MW:

130 kDa

Purification Method:

Antigen affinity purification

Recommended Dilutions:

WB: 1:500-1:1000

IP: 0.5-4.0 ug for 1.0-3.0 mg of total protein lysate

IHC: 1:300-1:1200

FC (Intra): 0.40 ug per 10⁶ cells in a 100 µl suspension

Applications

Tested Applications:

WB, IHC, FC (Intra), IP, ELISA

Cited Applications:

WB, IHC

Species Specificity:

human, mouse, rat

Cited Species:

human, mouse

Note-IHC: suggested antigen retrieval with TE buffer pH 9.0; (*) Alternatively, antigen retrieval may be performed with citrate buffer pH 6.0

Positive Controls:

WB : human brain tissue, mouse brain tissue, rat brain tissue

IP : mouse brain tissue,

IHC : mouse brain tissue, human gliomas tissue, human kidney tissue

FC (Intra) : Jurkat cells,

Background Information

CYFIP1/2 belongs to the CYFIP family and is involved in T-cell adhesion and p53-dependent induction of apoptosis. CYFIP1 contains 1,253 amino acids and shares 88% sequence identity with CYFIP2. CYFIP1 and CYFIP2 are members of a highly conserved protein family and share approximately 99% sequence identity with their mouse orthologs. CYFIP1 has been shown to interact with the small GTPase RAC1, which is implicated in development and maintenance of neuronal structures. Consistent with FMRP and RAC1 localization in dendritic fine structures, CYFIP1/2 are present in synaptosomal extracts. This antibody can recognize both CYFIP1 and CYFIP2.

Notable Publications

Author	Pubmed ID	Journal	Application
Nachmany Henny H	22430187	Dis Markers	WB
Jingying Zhong	40097518	Sci Rep	WB,IHC
Mirjana Malnar Črnigoj	37717009	Nat Commun	WB

Storage

Storage:

Store at -20°C. Stable for one year after shipment.

Storage Buffer:

PBS with 0.02% sodium azide and 50% glycerol, pH7.3

Aliquoting is unnecessary for -20°C storage

For technical support and original validation data for this product please contact:

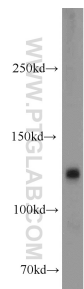
T: 4006900926

E: Proteintech-CN@ptglab.com

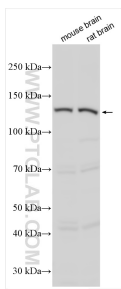
W: ptgcn.com

This product is exclusively available under Proteintech Group brand and is not available to purchase from any other manufacturer.

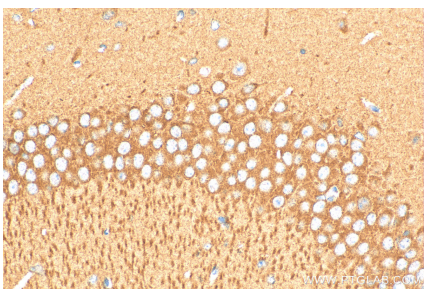
Selected Validation Data



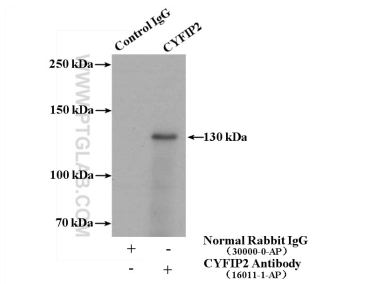
human brain tissue were subjected to SDS PAGE followed by western blot with 16011-1-AP (CYFIP2 antibody) at dilution of 1:1000 incubated at room temperature for 1.5 hours.



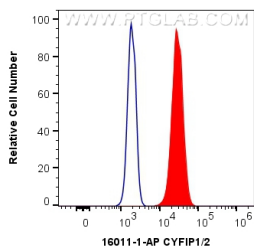
Various lysates were subjected to SDS PAGE followed by western blot with 16011-1-AP (CYFIP1/2 antibody) at dilution of 1:1500 incubated at room temperature for 1.5 hours.



Immunohistochemical analysis of paraffin-embedded mouse brain tissue slide using 16011-1-AP (CYFIP1/2 antibody) at dilution of 1:600 (under 40x lens). Heat mediated antigen retrieval with Tris-EDTA buffer (pH 9.0).



IP result of anti-CYFIP1/2 (IP:16011-1-AP, 4ug; Detection:16011-1-AP 1:700) with mouse brain tissue lysate 4000ug.



1X10⁶ Jurkat cells were intracellularly stained with 0.4 ug Anti-Human CYFIP1/2 (16011-1-AP) and CoraLite®488-Conjugated AffiniPure Goat Anti-Rabbit IgG(H+L) at dilution 1:1000 (red), or 0.4 ug Isotype Control. Cells were fixed with 4% PFA and permeabilized with Flow Cytometry Perm Buffer.