

For Research Use Only

FGL1 Polyclonal antibody

Catalog Number: 16000-1-AP

Featured Product

20 Publications



Basic Information

Catalog Number:

16000-1-AP

Concentration:

550 µg/ml

Source:

Rabbit

Isotype:

IgG

Immunogen Catalog Number:

AG8581

GenBank Accession Number:

BC007047

GeneID (NCBI):

2267

UNIPROT ID:

Q08830

Full Name:

fibrinogen-like 1

Calculated MW:

312 aa, 36 kDa

Observed MW:

34 kDa, 68 kDa

Purification Method:

Antigen affinity purification

Recommended Dilutions:

WB 1:500-1:1000

IP 0.5-4.0 µg for 1.0-3.0 mg of total protein lysate

IHC 1:50-1:500

Applications

Tested Applications:

WB, IP, IHC, ELISA

Cited Applications:

WB, IHC, IF

Species Specificity:

human, mouse, rat

Cited Species:

human, mouse

Note-IHC: suggested antigen retrieval with TE buffer pH 9.0; (*) Alternatively, antigen retrieval may be performed with citrate buffer pH 6.0

Positive Controls:

WB: human placenta tissue, human liver tissue, HepG2 cells, mouse thymus tissue

IP: HeLa cells,

IHC: human liver cancer tissue, human hepatocirrhosis tissue, mouse liver tissue

Background Information

FGL1 is a 68 kDa protein that comprises two disulfide linked 34 kDa homodimers. FGL1 is a predominantly liver expressed protein that has been implicated as both a hepatoprotectant and a hepatocyte mitogen. FGL1 expression is decreased in hepatocellular carcinoma (HCC), and it may play a role in the development of hepatocellular carcinomas.

Notable Publications

Author	Pubmed ID	Journal	Application
Xue-Liang Sun	34629811	World J Gastroenterol	WB,IHC
Na-Kyung Han	31489941	Cells	IHC
Xi-Yang Tang	36268014	Front Immunol	WB,IHC

Storage

Storage:

Store at -20°C. Stable for one year after shipment.

Storage Buffer:

PBS with 0.02% sodium azide and 50% glycerol, pH7.3

Aliquoting is unnecessary for -20°C storage

For technical support and original validation data for this product please contact:

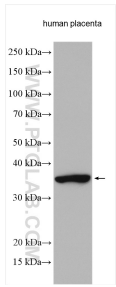
T: 4006900926

E: Proteintech-CN@ptglab.com

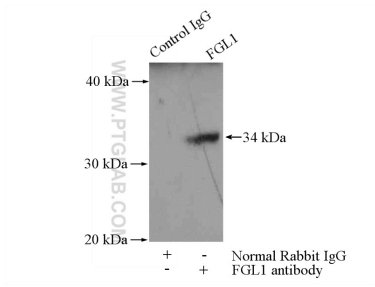
W: ptgcn.com

This product is exclusively available under Proteintech Group brand and is not available to purchase from any other manufacturer.

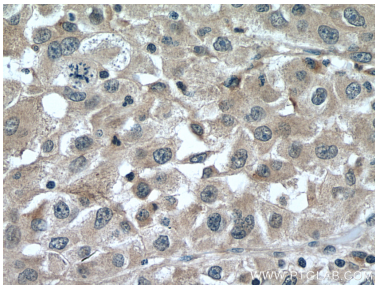
Selected Validation Data



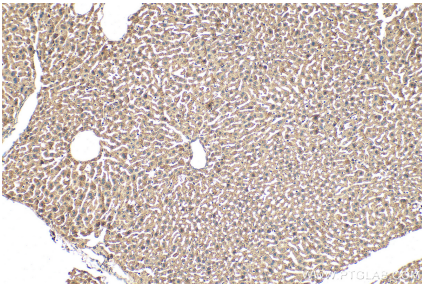
Human placenta tissue were subjected to SDS PAGE followed by western blot with 16000-1-AP (FGL1 antibody) at dilution of 1:800 incubated at room temperature for 1.5 hours.



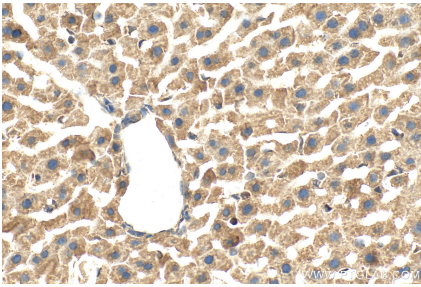
IP result of anti-FGL1 (IP:16000-1-AP, 4ug; Detection:16000-1-AP 1:500) with HeLa cells lysate 2000ug.



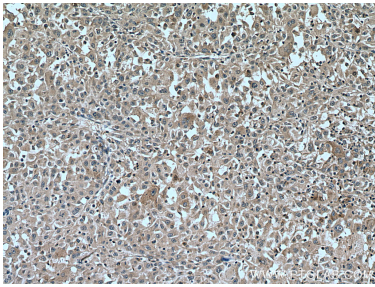
Immunohistochemical analysis of paraffin-embedded human liver cancer tissue slide using 16000-1-AP (FGL1 antibody) at dilution of 1:200 (under 40x lens). Heat mediated antigen retrieval with Tris-EDTA buffer (pH 9.0).



Immunohistochemical analysis of paraffin-embedded mouse liver tissue slide using 16000-1-AP (FGL1 antibody) at dilution of 1:200 (under 10x lens). Heat mediated antigen retrieval with Tris-EDTA buffer (pH 9.0).



Immunohistochemical analysis of paraffin-embedded mouse liver tissue slide using 16000-1-AP (FGL1 antibody) at dilution of 1:200 (under 40x lens). Heat mediated antigen retrieval with Tris-EDTA buffer (pH 9.0).



Immunohistochemical analysis of paraffin-embedded human liver cancer tissue slide using 16000-1-AP (FGL1 antibody) at dilution of 1:200 (under 10x lens). Heat mediated antigen retrieval with Tris-EDTA buffer (pH 9.0).