

For Research Use Only

# TCP1 eta Polyclonal antibody

Catalog Number: 15994-1-AP

9 Publications



## Basic Information

Catalog Number:

15994-1-AP

Source:

Rabbit

Isotype:

IgG

Immunogen Catalog Number:

AG8868

GenBank Accession Number:

BC019296

GeneID (NCBI):

10574

UNIPROT ID:

Q99832

Full Name:

chaperonin containing TCP1, subunit 7 (eta)

Calculated MW:

543 aa, 59 kDa

Observed MW:

59 kDa

Purification Method:

Antigen affinity purification

Recommended Dilutions:

WB: 1:2000-1:12000

IP: 0.5-4.0 ug for 1.0-3.0 mg of total protein lysate

IF/ICC: 1:50-1:500

## Applications

Tested Applications:

WB, IF/ICC, IP, ELISA

Cited Applications:

WB, IHC, CoIP

Species Specificity:

human, mouse, rat

Cited Species:

human, mouse, chicken

Positive Controls:

WB : HEK-293 cells, HeLa cells, MCF-7 cells, MDA-MB-231 cells

IP : HEK-293 cells,

IF/ICC : MCF-7 cells,

## Background Information

CCT7 is a subunit of CCT complex-a large cytosolic chaperonin complex composed of two hetero-oligomeric stacked rings able to interact with nascent polypeptides, which mediates protein folding in an ATP-dependent manner and prevents aggregation in eukaryotes. Each ring consists of eight different subunits (CCT1 to CCT8). CCT7 is involved in preventing aggregation of GPCRs and in regulating their expression, maturation, and transport to the cell surface.

## Notable Publications

Author	Pubmed ID	Journal	Application
Hongyu Chen	36404333	Clin Proteomics	WB
Erika C Urdaneta	30824702	Nat Commun	WB
Adela S Oliva Chávez	34140472	Nat Commun	WB

## Storage

Storage:

Store at -20°C. Stable for one year after shipment.

Storage Buffer:

PBS with 0.02% sodium azide and 50% glycerol, pH7.3

Aliquoting is unnecessary for -20°C storage

For technical support and original validation data for this product please contact:

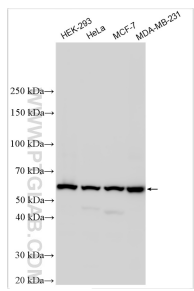
T: 4006900926

E: [Proteintech-CN@ptglab.com](mailto:Proteintech-CN@ptglab.com)

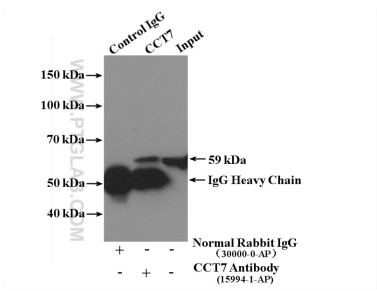
W: [ptgcn.com](http://ptgcn.com)

This product is exclusively available under Proteintech Group brand and is not available to purchase from any other manufacturer.

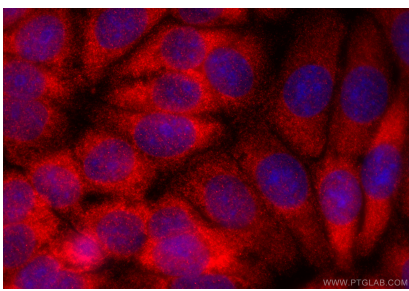
Selected Validation Data



Various lysates were subjected to SDS PAGE followed by western blot with 15994-1-AP (TCP1 eta antibody) at dilution of 1:6000 incubated at room temperature for 1.5 hours.



IP result of anti-CCT7 (IP:15994-1-AP, 4ug; Detection:15994-1-AP 1:1000) with HEK-293 cells lysate 2400ug.



Immunofluorescent analysis of (-20°C Methanol) fixed MCF-7 cells using TCP1 eta antibody (15994-1-AP) at dilution of 1:200 and CoraLite®594-Conjugated Goat Anti-Rabbit IgG(H+L) (SA00013-4).