

For Research Use Only

KCNJ15 Polyclonal antibody

Catalog Number: 15988-1-AP

Featured Product

3 Publications



Basic Information

Catalog Number:

15988-1-AP

Size:

500 µg/ml

Source:

Rabbit

Isotype:

IgG

Immunogen Catalog Number:

AG8795

GenBank Accession Number:

BC013327

GeneID (NCBI):

3772

UNIPROT ID:

Q99712

Full Name:

potassium inwardly-rectifying channel, subfamily J, member 15

Calculated MW:

375 aa, 43 kDa

Observed MW:

35 kDa

Purification Method:

Antigen affinity purification

Recommended Dilutions:

WB 1:500-1:3000

IP 0.5-4.0 µg for 1.0-3.0 mg of total protein lysate

IHC 1:20-1:200

Applications

Tested Applications:

IHC, IP, WB, ELISA

Cited Applications:

WB, IF, IHC

Species Specificity:

human, mouse, rat

Cited Species:

human, mouse

Note-IHC: suggested antigen retrieval with TE buffer pH 9.0; (*) Alternatively, antigen retrieval may be performed with citrate buffer pH 6.0

Positive Controls:

WB : HeLa cells, HepG2 cells

IP : HepG2 cells,

IHC : human liver tissue,

Background Information

KCNJ15, also named as KIR1.3, KIR4.2, and IRKK, is a multi-pass membrane protein belonging to the inwardly-rectifying potassium channel (KIR) family. KIR channels perform functions as diverse as the regulation of resting membrane potential, maintenance of potassium ions homeostasis, control of heart rate and hormone secretion. Cloned from human kidney, the KCNJ15 gene is localized on chromosome 21 in the Down syndrome chromosome region 1 (DCR1) and has been identified as a type 2 diabetes-associated risk gene. The gene is most readily expressed in the pancreas and kidney and less in the lung. (PMID: 8995301; 9299242; 20085713)

Notable Publications

Author	Pubmed ID	Journal	Application
Ken-Ichi Nakajima	26449415	Nat Commun	WB, IF
Shunsuke Nakamura	32052303	Ann Surg Oncol	IHC
Kobayashi Atsushi A	22991451	DNA Res	IHC

Storage

Storage:

Store at -20°C. Stable for one year after shipment.

Storage Buffer:

PBS with 0.02% sodium azide and 50% glycerol pH 7.3.

Aliquoting is unnecessary for -20°C storage

For technical support and original validation data for this product please contact:

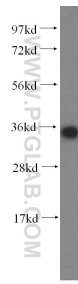
T: 4006900926

E: Proteintech-CN@ptglab.com

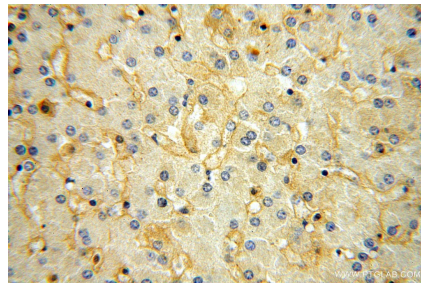
W: ptgcn.com

This product is exclusively available under Proteintech Group brand and is not available to purchase from any other manufacturer.

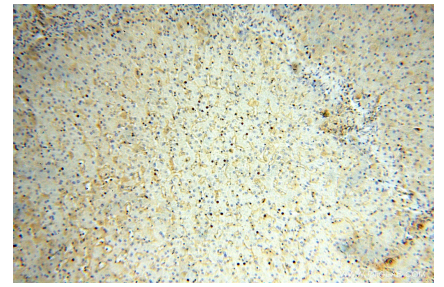
Selected Validation Data



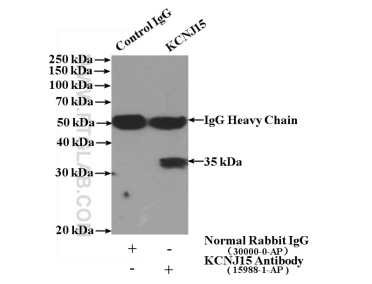
HeLa cells were subjected to SDS PAGE followed by western blot with 15988-1-AP (KCNJ15 antibody) at dilution of 1:500 incubated at room temperature for 1.5 hours.



Immunohistochemical analysis of paraffin-embedded human liver using 15988-1-AP (KCNJ15 antibody) at dilution of 1:100 (under 40x lens).



Immunohistochemical analysis of paraffin-embedded human liver using 15988-1-AP (KCNJ15 antibody) at dilution of 1:100 (under 10x lens).



IP result of anti-KCNJ15 (IP:15988-1-AP, 4ug; Detection:15988-1-AP 1:500) with HepG2 cells lysate 1000ug.